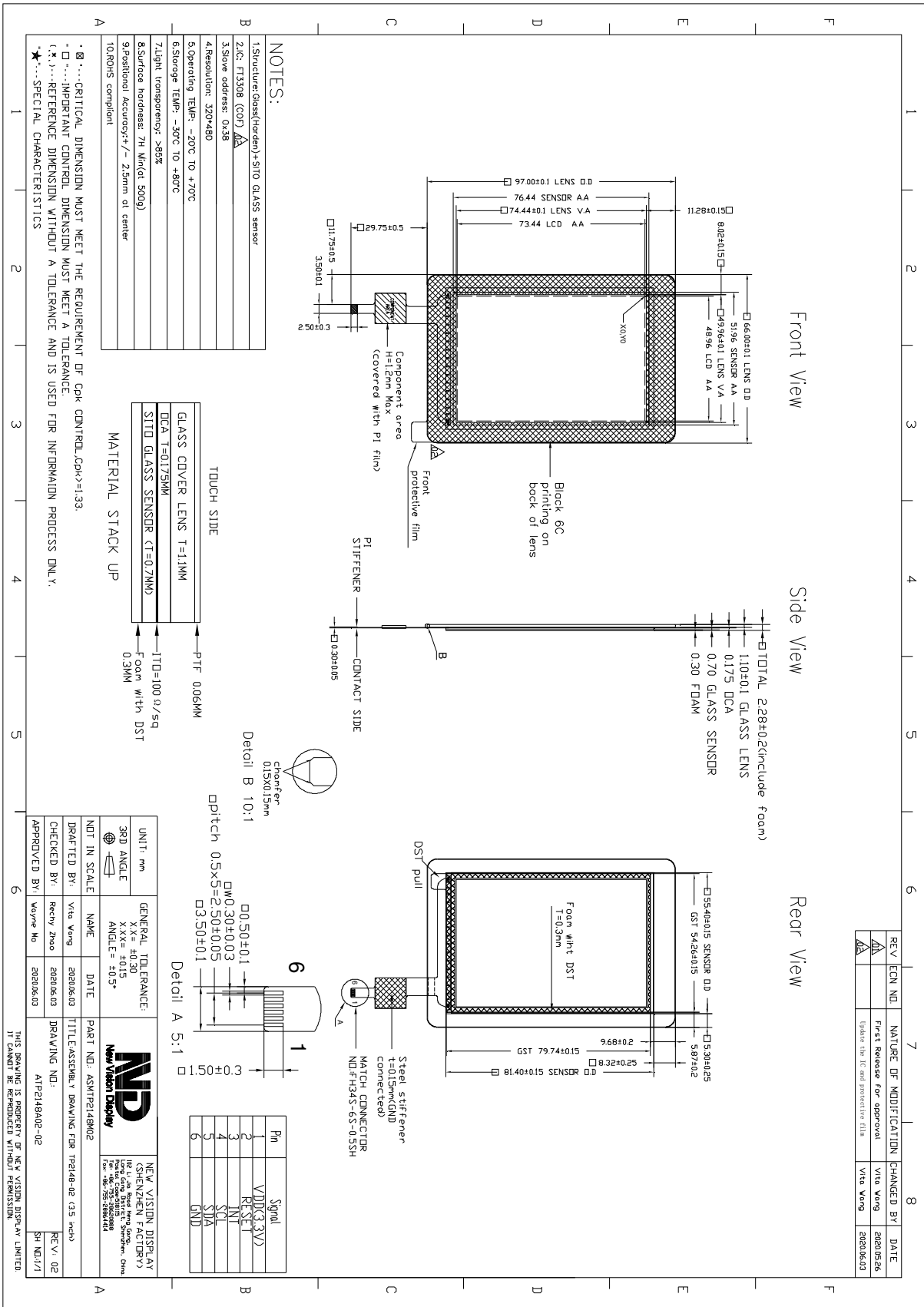


TOUCH PANEL SPECIFICATIONS	Projected Capacitive	Glass Substrate	3.5" Diagonal
-----------------------------------	---------------------------------	----------------------------	--------------------------

Part Number	TP2148SA035C-02
Outline Dimensions of TP sensor	55.40 (W) x 81.40 (H) x 0.7 (D)mm
Overall Dimensions incl. cover lens	66.00 (W) x 97.00 (H) x 1.1 (D)mm
Active Area	51.96 (W) x 76.44 (H)mm
Input Method	Bare finger
Number of simultaneous touches	1
Min. spacing between two touches	18mm
Positional Accuracy	±2.5mm at center and edges
Resolution	320*480
Response Time / Speed	≅ 17.5ms
Minimum Touch Area	30mm ²
Minimum Touch Pressure	0N
Optical Transmittance	>85%
Operating temperature	-20°C to +70°C
Storage temperature	-30°C to +80°C
Life of touches	>10 million over lifetime
Surface Hardness	7H
Anti-glare surface	No
FPC attachment method	ACF bonding
FPC bending radius	1mm
Touch controller IC	FT3308(COF)
Interface to Host	I2C
I2C Address	0x38
Operating Voltage	3.3V

The information contained herein is based upon typical data, New Vision Display makes no warranties expressed or implied as to its accuracy and assumes no liability arising out of its use by others. The user should determine suitability of New Vision Displays for each individual application.



The information contained herein is based upon typical data, New Vision Display makes no warranties expressed or implied as to its accuracy and assumes no liability arising out of its use by others. The user should determine suitability of New Vision Displays for each individual application.