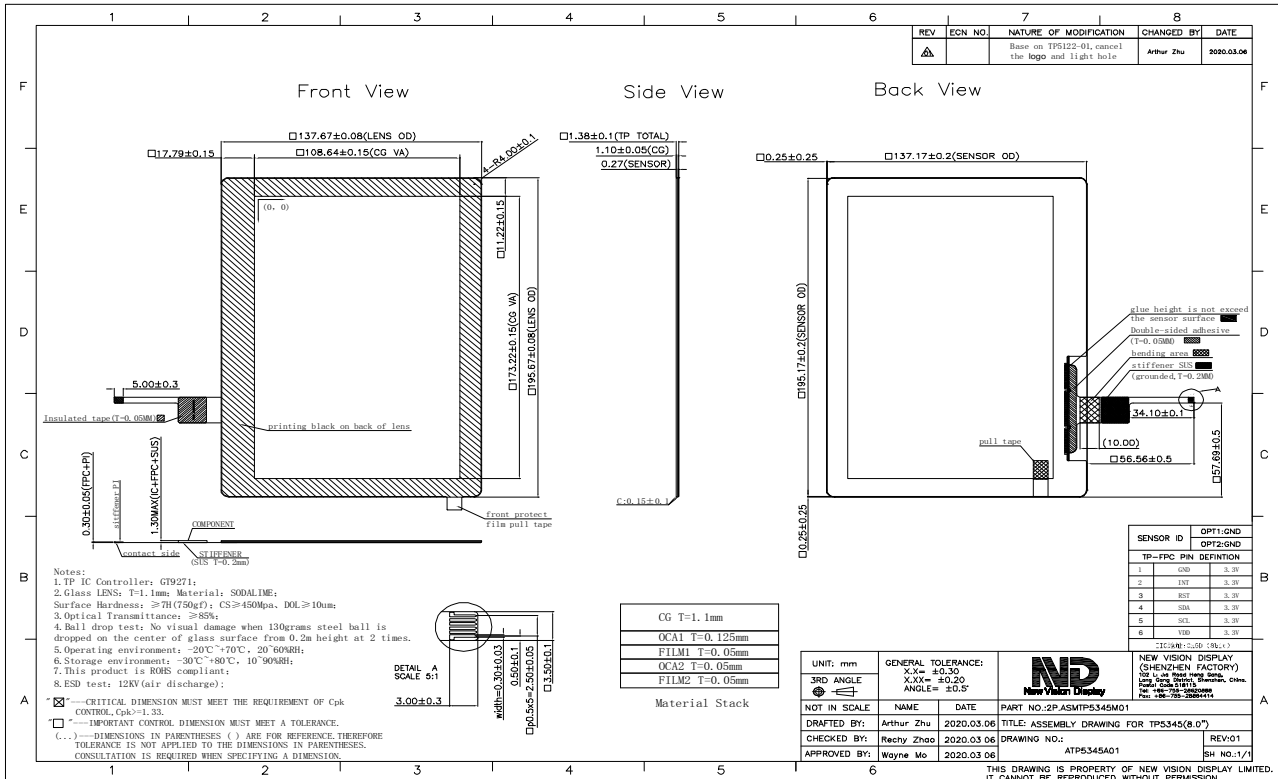


| | |
|-------------------------------------|---|
| Part Number | 1P.NVDS-TP5345TA080C-01 |
| Outline Dimensions of TP Sensor | 195.17(H)x137.17(V)x0.275(D) mm |
| Overall Dimensions incl. cover lens | 137.67(H)x195.67(V)x1.38(D)mm |
| Active Area | 182.58 (H) x 116.37 (V) mm |
| Input Method | Bare or gloved finger |
| Number of Simultaneous Touches | 10 Points |
| Min. spacing between two touches | 18mm |
| Positional Accuracy | ± 2.0mm at edge and ± 1.5mm at centre |
| Resolution | 800 (H) x 1280 (V) |
| Response Time/Speed | <20ms |
| Minimum Touch Area | 30 mm ² |
| Minimum Touch Pressure | 0 N |
| Optical Transmittance | >85% |
| Operating temperature | -20°C to +70°C |
| Life of Touches | >10 million over lifetime (With correct input method) |
| Surface Hardness | ≥7H(750gf) |
| Anti-glare surface | No |
| FPC attachment method | ACF bonding |
| FPC bending radius | 1mm |
| Touch Controller | GT9271 |
| Interface to Host | I2C |
| I2C Address | 0x28/0x29 or 0xBA/BB (8Bit) |
| Operating Voltage | 3.3V |



The information contained herein is based upon typical data, New Vision Display makes no warranties expressed or implied as to its accuracy and assumes no liability arising out of its use by others. The user should determine suitability of New Vision Displays for each individual application.