

TFT PRODUCT SPECIFICATIONS	1024RGB x 600	16.7M Colors	7.0" Diagonal
-----------------------------------	----------------------	---------------------	----------------------

Part Number	TM2264DA070L-01
Overall Dimensions	216 (H) x 120.45(V) x 4.9(T)
Active Area	154.2144(H) x 85.92(V)
Resolution	1024 RGB (H) x 600 (V)
Pixel Size	0.1506 (H) x 0.1432(V) mm
Display Colors	16.7M
Display Mode	IPS/Transmissive /Normally Black
LCD Type	a-Si TFT
Contrast Ratio	800:1 (Typ)
Viewing Angles (CR≥10)	85°/85°/85°/85° (Left/Right/Top/Bottom)
View Direction	Viewing angle free
Brightness (I=120mA)	300cd/m ² (TYP.)
NTSC	50%
Driver IC	EK79001HB (Source&TCON)+ EK73215BCGA (Gate)
AVDD	9.6V
VDD	3.3V
VGH	18V
VGL	-6.0V
VCOM	3.2V(VCOM should be adjusted to make the flicker level be minimum.)
Interface	8bits LVDS
Backlight System	24 White LED,4 in series,6 in Parallel
Forward Voltage	12.4V(typ)
Forward Current	120mA (typ)

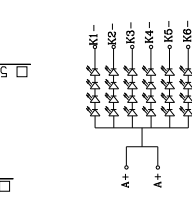
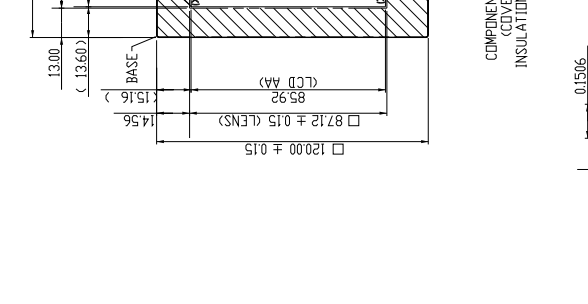
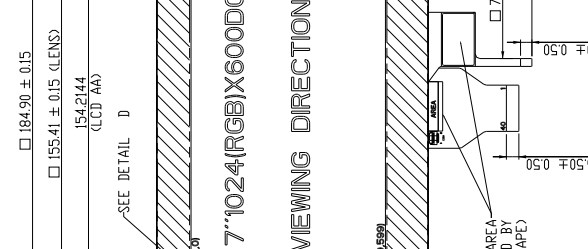
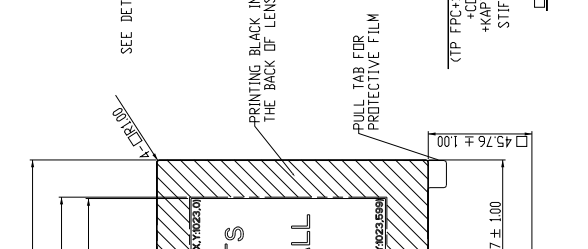
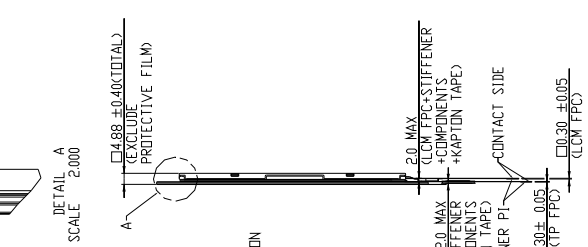
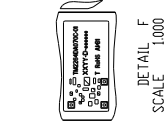
Touch Panel Parameter

Input Method	Bare or gloved finger or thick (8mm) conductive stylus
Number of simultaneous touches	5 point
Min. spacing between 2 touches	18mm
Positional Accuracy	±1.5mm at center; ±2mm at the edges
Minimum Touch Area	30mm ²
Minimum Touch Pressure	0N
Number of touches	>10 million over lifetime
Anti-glare surface	No
Optical Transmittance	>86%
Non-Linearity	≅3.0%
RoHS Compliance	Yes
Power Consumption	TBD(mW)
Interface to Host	≅I2C
Response Time/Speed	15ms
I2C Address	0X4A
Touch controller	MXT336U-MAU
Operating Voltage	3.8V

The information contained herein is based upon typical data, New Vision Display makes no warranties expressed or implied as to its accuracy and assumes no liability arising out of its use by others. The user should determine suitability of New Vision Displays for each individual application.

- ★ --- CRITICAL DIMENSION MUST MEET THE REQUIREMENT OF Cpk
- --- CONTROL LCP2-133
- --- HUMAN EYE VIEWING DIMENSION MUST MEET A TOLERANCE
- () --- DIMENSIONS IN PARENTHESES ARE FOR REFERENCE PURPOSE
- () --- DIMENSIONS IN PARENTHESES ARE FOR REFERENCE PURPOSE
- () --- TOLERANCE IS NOT APPLIED TO THE DIMENSIONS IN PARENTHESES.
- ★ --- CONSULTATION IS REQUIRED WHEN SPECIFYING A DIMENSION.
- ★ --- SPECIAL CHARACTERISTICS.

2D LABEL OR CODE FORMAT
 INCLUDES SAMPLE DATA STRING
 FIRST LINE: TM264-0A07C-(R)WVD P/N0
 SECOND LINE: XXXX-D-XXXXXX
 THIRD LINE: XXXX-XXXXXX
 FOURTH LINE: XXXX-XXXXXX
 (A/B/SHIFT A/B)



PIN OUT OF LCM FPC	
1	VDD
2	RESET
3	VGH
4	VGL
5	AVDD
6	CTP_RESET
7	CTP_SCL
8	CTP_SDA
9	CTP_INT
10	CTP_VDD
11	RXIN+
12	RXIN-
13	GND
14	RXIN2+
15	RXIN2-
16	GND
17	RXIN3+
18	RXIN3-
19	GND
20	RXIN4+
21	RXIN4-
22	GND
23	NC
24	GND
25	ID_SCL
26	ID_SDA
27	NC
28	NC
29	NC
30	NC
31	LED_A+
32	LED_A+
33	GND
34	LED_K1-
35	LED_K2-
36	LED_K3-
37	LED_K4-
38	LED_K5-
39	LED_K6-
40	GND

NOTE:
 1. DISPLAY TYPE: TFT 1024(RGB)X600 TRANSMISSIVE.
 2. DISPLAY TYPE: TFT 1024(RGB)X600 TRANSMISSIVE.
 3. HUMAN EYE VIEWING DIRECTION: ALL.
 4. BACKLIGHT: 24 pins WHITE LEDs
 5. STRAP: 5V, GND, C-7V, C
 6. CUSTOMER PROJECT NAME, NO SPECIFIED
 7. CUSTOMER PART NO, NO SPECIFIED
 8. THIS DISPLAY CANNOT BE USED FOR
 IT SHOULD COVER TO FULLY JC BOTTOM AND THE BONDING AREA OF FPC AND LCM.
 9. 3M GLUE JP190 TO BE ADDED BETWEEN FPC AND THE EDGE OF LCD OR SENSOR
 10. ALL PARTS MUST BE RoHS COMPLIANCE.

NEW VISION DISPLAY
 (SHENZHEN FACTORY)
 New Vision Display
 Longgang District, Shenzhen, China
 Tel: +86-755-28888888
 Fax: +86-755-28888813

General Tolerance:
 X.X = ± 0.3
 X.XX = ± 0.20
 ANGLE = ± 0.5°

UNIT: mm

3RD ANGLE

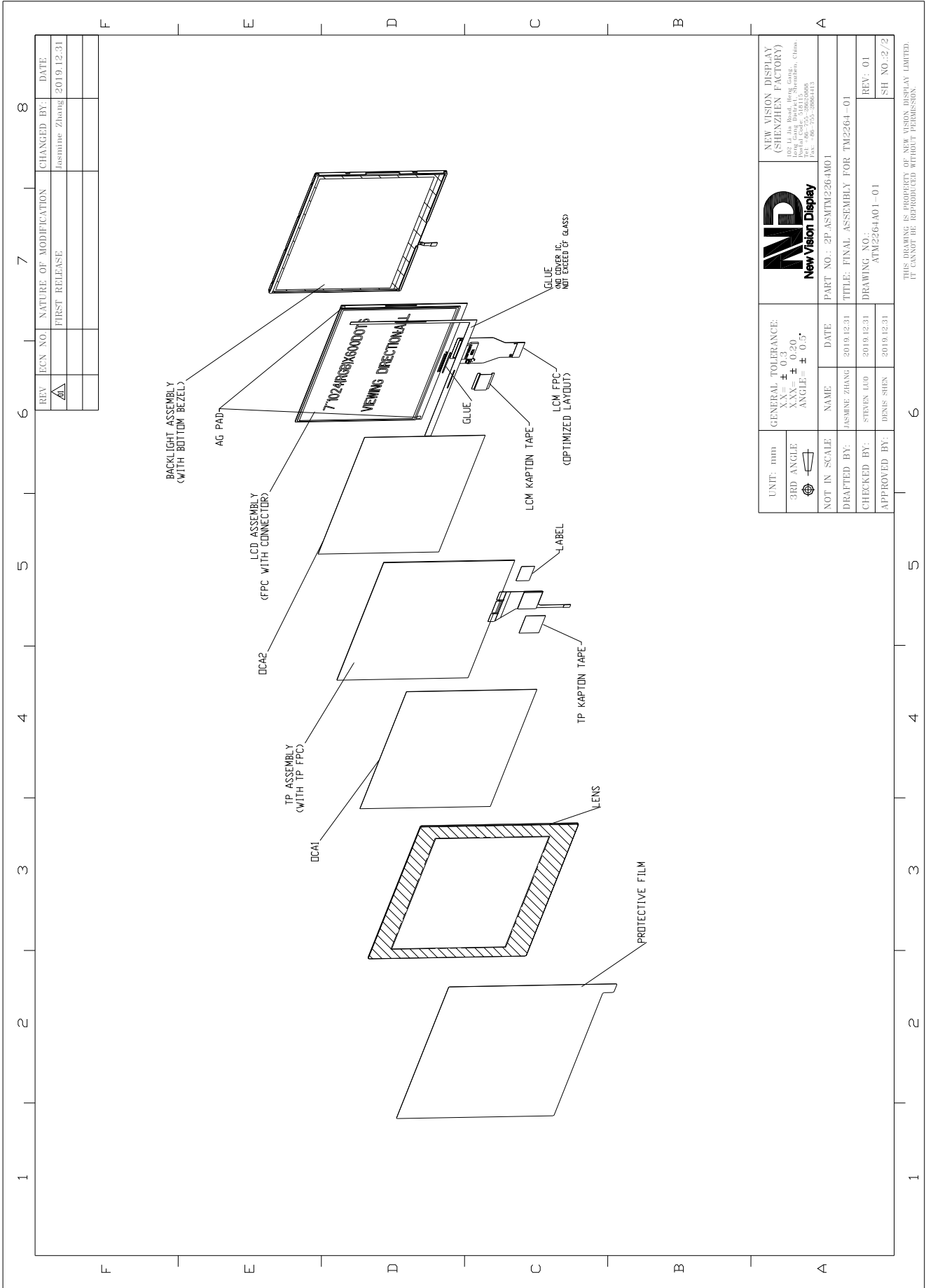
NOT IN SCALE

DRAFTED BY: JASMINE ZHANG
CHECKED BY: STEVEN LIAO
APPROVED BY: DENNIS SHEN

DATE: 2019.12.31
DATE: 2019.12.31
DATE: 2019.12.31

PART NO.: 2P-ASMTM2264M01
TITLE: FINAL ASSEMBLY FOR TM2264-01
DRAWING NO.: ATM2264A01-01

REV. NO.: 1/2
SH NO.: 1/2



REV	ECN NO	NATURE OF MODIFICATION	CHANGED BY	DATE
1		FIRST RELEASE	Jasmine Zhang	2019.12.31

UNIT: mm	GENERAL TOLERANCE: XX= ± 0.3 XXX= ± 0.20 ANGLE= ± 0.5°	 New Vision Display NEW VISION DISPLAY (SHENZHEN FACTORY) 12/F, Long Huihai Building, Shennan East Road, Futian District, Shenzhen, China TEL: +86-755-28625088 FAX: +86-755-28624113	
3RD ANGLE			
NOT IN SCALE	NAME	DATE	PART NO.: 2P-ASMTM2264A01
DRAFTED BY: JASMINE ZHANG	2019.12.31	TITLE: FINAL ASSEMBLY FOR TM2264-01	REV: 01
CHECKED BY: STEVEN LIO	2019.12.31	DRAWING NO.: ATM2264A01-01	SH NO.: 2/2
APPROVED BY: DENIS SHUN	2019.12.31		

THIS DRAWING IS PROPERTY OF NEW VISION DISPLAY LIMITED.
IT CANNOT BE REPRODUCED WITHOUT PERMISSION.



The information contained herein is based upon typical data, New Vision Display makes no warranties expressed or implied as to its accuracy and assumes no liability arising out of its use by others. The user should determine suitability of New Vision Displays for each individual application.