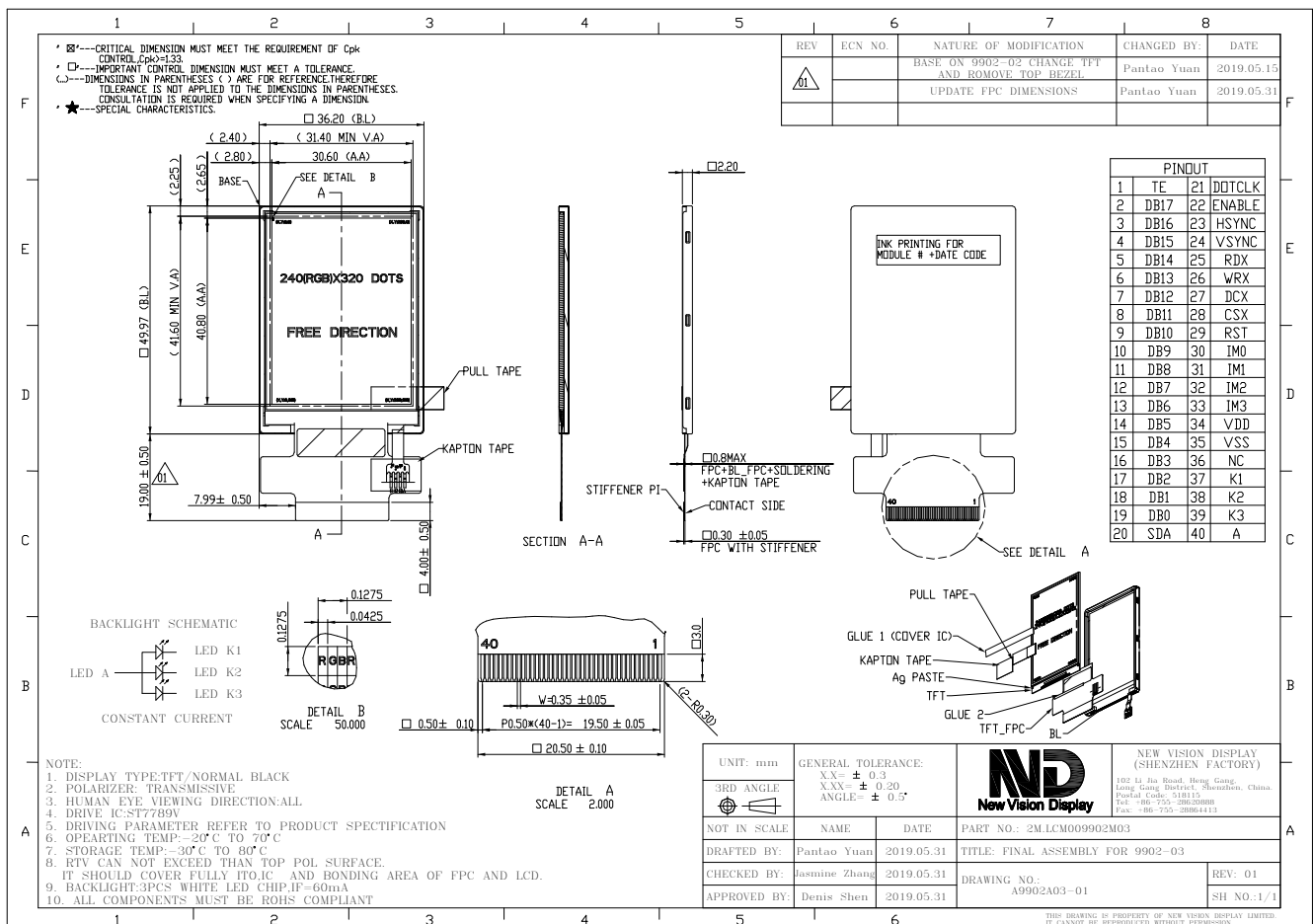


Part Number	9902DPTL020H-03
Overall Dimensions	36.20(H)x49.97(V)x2.20(T)
Active Area	30.60 (H) x 40.80 (V) mm
Resolution	240 RGB (H) x 320 (V) Stripe
Pixel Size	0.1275 x 0.1275mm
Display Colors	262K
Display Mode	TFT,IPS, Normally Black, Transmissive
LCD Type	a-Si TFT
Contrast Ratio	TBD
Viewing Angles (CR≥10)	80°/80°/80°/80° (Left/Right/Top/Bottom)
View Direction	ALL
Grayscale Reversion	-
Brightness (I=60mA)	420cd/m ² (Min)
NTSC	TBD
Driver IC	ST7789V
VDD	2.8~3.3V
Interface	Parallel CPU /SPI/18-Bit RGB(DE mode) interface
Backlight System	3 White LEDs in parallel
Forward Voltage(BL)	3.2V(typ)
Forward Current(BL)	60mA (typ)



The information contained herein is based upon typical data, New Vision Display makes no warranties expressed or implied as to its accuracy and assumes no liability arising out of its use by others. The user should determine suitability of New Vision Displays for each individual application.