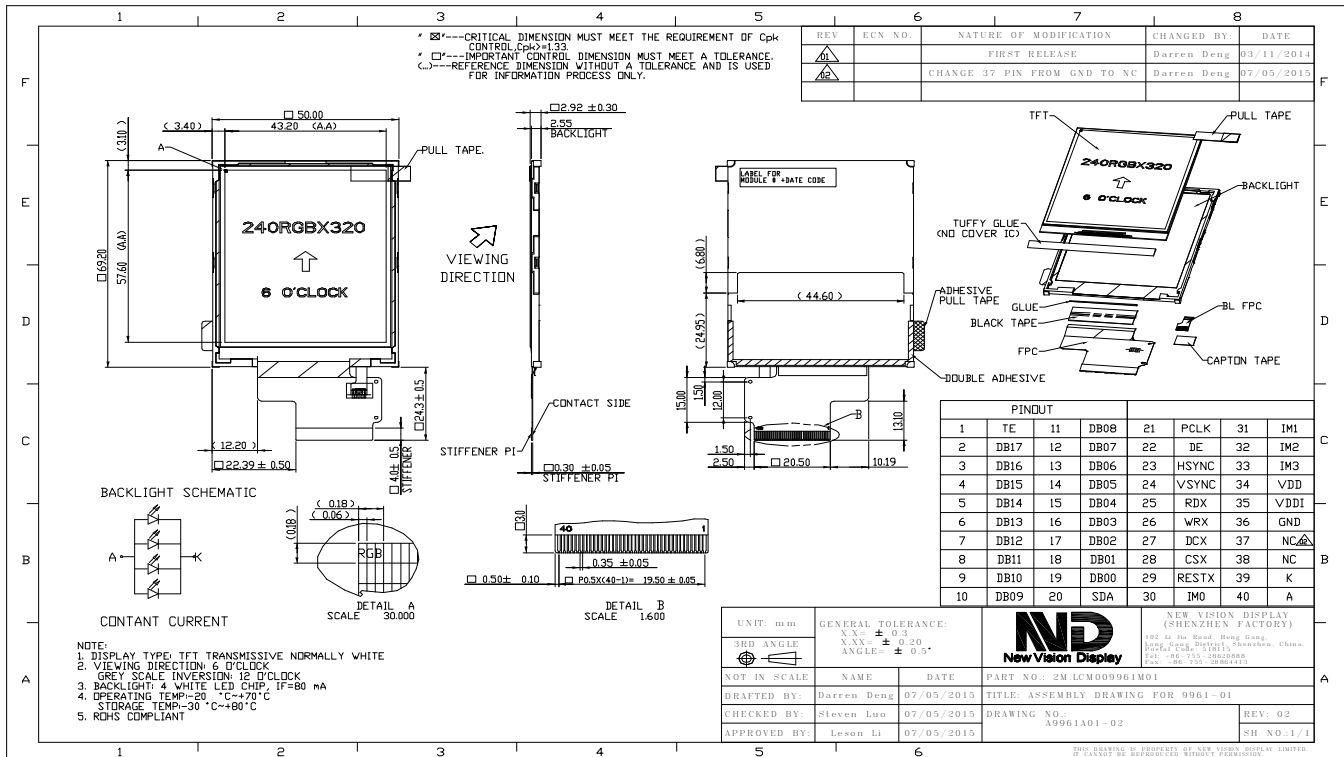


Part Number	1M.NVDI- 9961DPLP028H-01
Overall Dimensions	50.0(H) x 69.20(V) x 2.92(D) mm
Active Area	43.20 (H) x 57.60 (V)mm
Resolution	240RGB(H) x 320(V)
Pixel Size	0.18(H) x 0.18 (V)mm
Display Colors	262K
Display Mode	TN/Normally White/ Transmissive
LCD Type	a-Si TFT
Contrast Ratio	500:1 (Typ)
Viewing Angles (CR≥10)	65°/65°/65°/60° (Left/Right/Top/Bottom)
View Direction	6 o'clock
Brightness (I=80mA)	300cd/m ² (Typ)
NTSC	55%
Driver IC	ST7789V or EQU
VDD	2.4~3.3V
Interface	SPI / RGB interface / MCU parallel interface
Backlight System	4 White LEDs in parallel
Forward Voltage	3.2V(typ)
Forward Current	80mA (typ)
LED life time	30000 hours



The information contained herein is based upon typical data, New Vision Display makes no warranties expressed or implied as to its accuracy and assumes no liability arising out of its use by others. The user should determine suitability of New Vision Displays for each individual application.