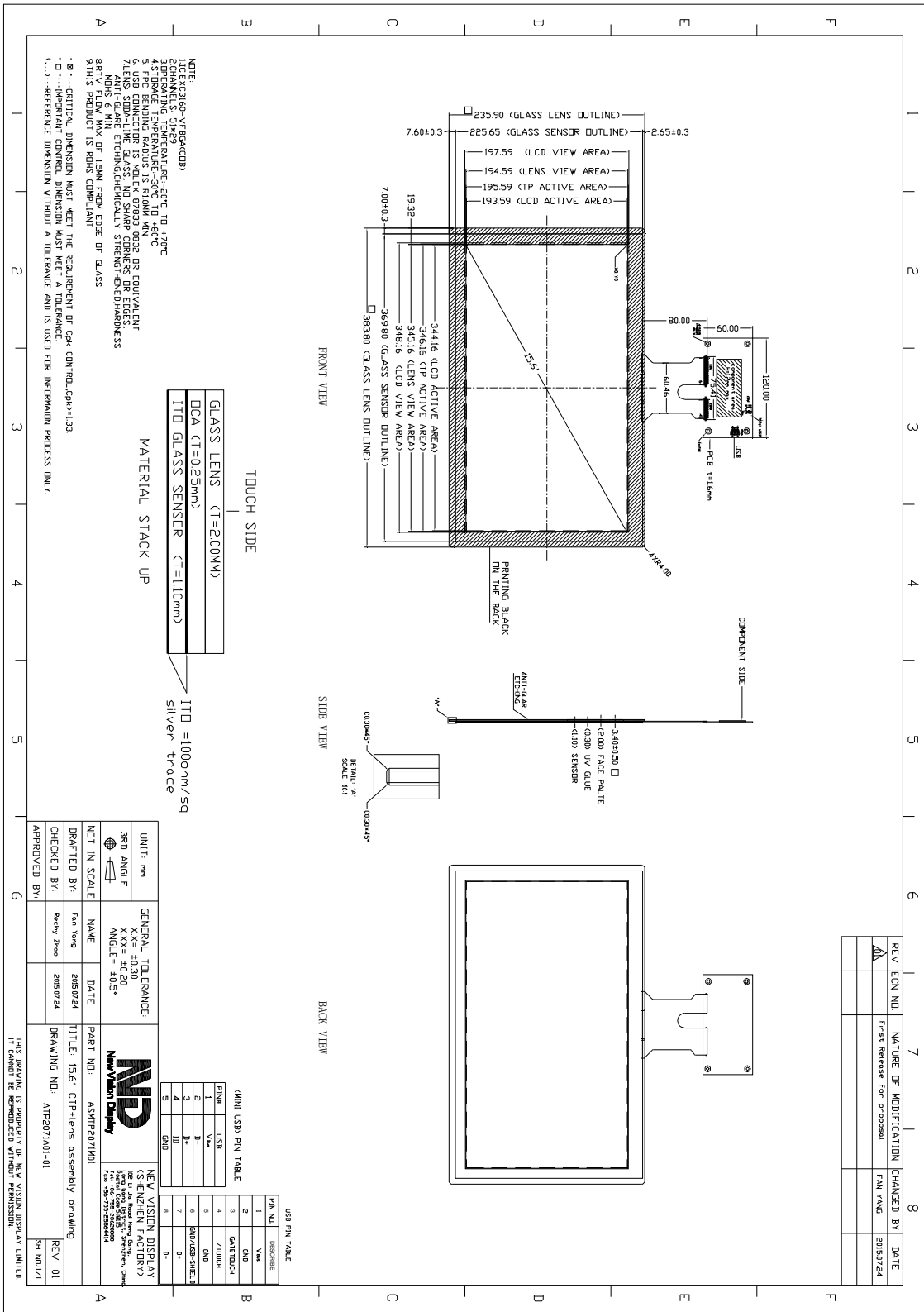


<b>TOUCH PANEL SPECIFICATIONS</b>	<b>Projected Capacitive</b>	<b>Glass Substrate</b>	<b>15.6" Diagonal</b>
-----------------------------------	---------------------------------	----------------------------	---------------------------

Part Number	1P.NVDS-TP2071DA156C -01
Outline Dimensions of TP sensor	369.80(H) x 225.65(V) x 1.10(D)mm
Overall Dimensions incl. cover lens	383.80(H) x 235.90(V) x 3.40(D)mm
Active Area	346.16(H) x 195.59 (V)mm
Input Method	Bare or gloved finger or thick conductive stylus
Number of simultaneous touches	10
Min. spacing between two touches	20mm
Positional Accuracy	± 2.5 mm at 4 edges and ±1.5mm at center
Resolution	4096*4096
Response Time / Speed	<25ms
Minimum Touch Area	30mm <sup>2</sup>
Minimum Touch Pressure	0 N
Optical Transmittance	>87%
ITO resistivity	100 Ω/□
Operating temperature	-20°C to +70°C, 35%~70% RH non-condensing
Storage temperature	-30°C to +80°C, 35%~70% RH non-condensing
Life of touches	>10 million over lifetime
Surface Hardness	7H
Anti-glare surface	Yes
FPC attachment method	ACF bonding
FPC pull-off strength	>50 g/mm
FPC bending radius	1mm
Touch controller IC	EXC3160
Interface to Host	USB
I2C Address	N/A
Operating Voltage	VDD=5.0V

The information contained herein is based upon typical data, New Vision Display makes no warranties expressed or implied as to its accuracy and assumes no liability arising out of its use by others. The user should determine suitability of New Vision Displays for each individual application.



The information contained herein is based upon typical data, New Vision Display makes no warranties expressed or implied as to its accuracy and assumes no liability arising out of its use by others. The user should determine suitability of New Vision Displays for each individual application.