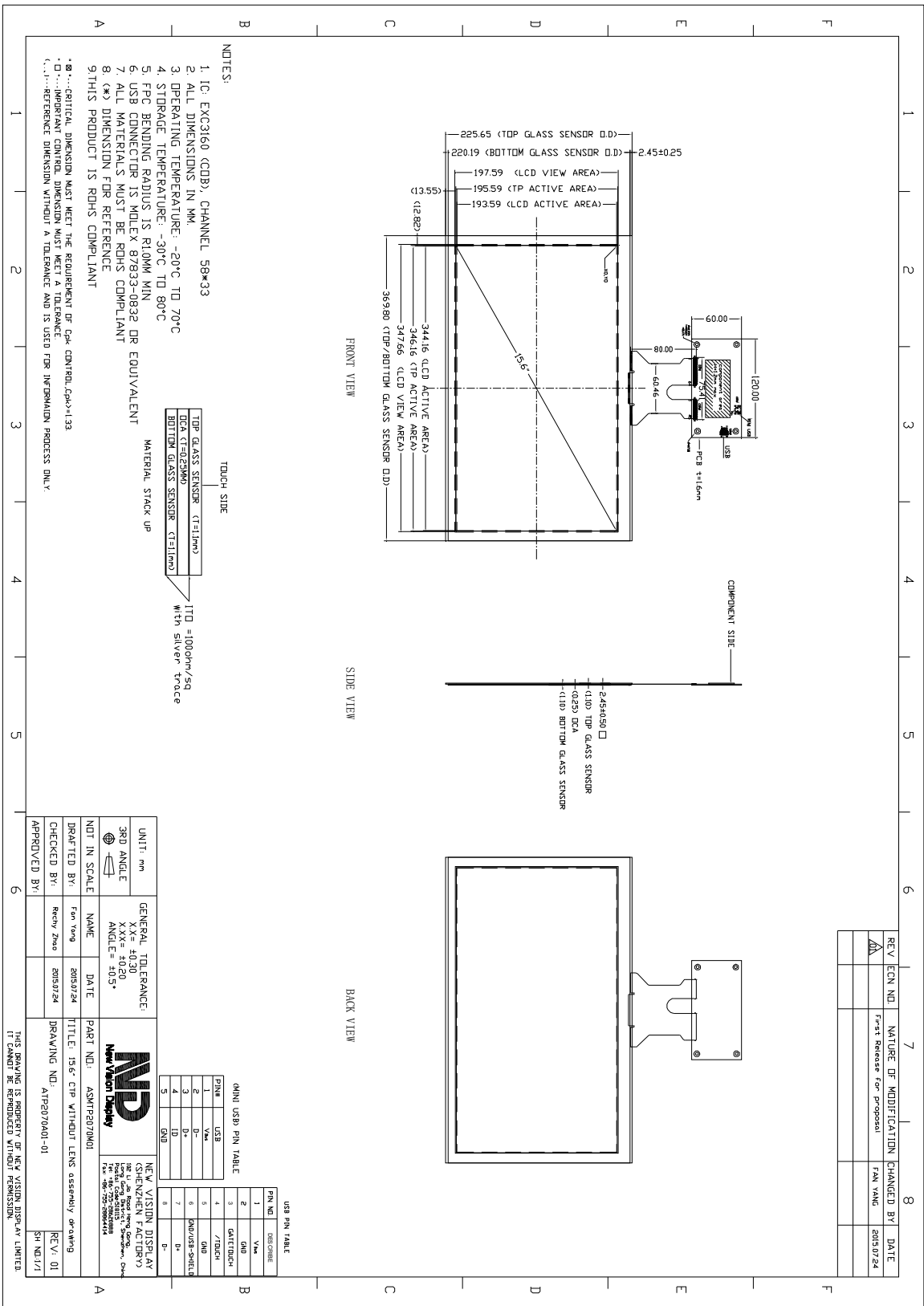
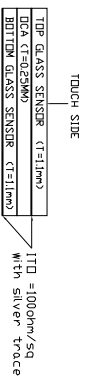


TOUCH PANEL SPECIFICATIONS	Projected Capacitive	Glass Substrate	15.6" Diagonal
Part Number	1P.NVDS-TP2070TA156C -01		
Outline Dimensions of TP sensor	369.80(H) x225.65(V) x 2.45(D)mm		
Overall Dimensions incl. cover lens	N/A		
Active Area	346.16(H) x 195.59 (V)mm		
Input Method	Bare or gloved finger or thick conductive stylus		
Number of simultaneous touches	10		
Min. spacing between two touches	20mm		
Positional Accuracy	± 2.5 mm at 4 edges and ± 1.5mm at center		
Resolution	4096*4096		
Response Time / Speed	<25ms		
Minimum Touch Area	30mm ²		
Minimum Touch Pressure	0 N		
Optical Transmittance	>87%		
ITO resistivity	100 Ω/□		
Operating temperature	-20°C to +70°C,35%~70% RH non-condensing		
Storage temperature	-30°C to +80°C,35%~70% RH non-condensing		
Life of touches	>10 million over lifetime		
Surface Hardness	7H		
Anti-glare surface	No		
FPC attachment method	ACF bonding		
FPC pull-off strength	>50 g/mm		
FPC bending radius	1mm		
Touch controller IC	EXC3160		
Interface to Host	USB		
I2C Address	N/A		
Operating Voltage	VDD=5.0V		

The information contained herein is based upon typical data, New Vision Display makes no warranties expressed or implied as to its accuracy and assumes no liability arising out of its use by others. The user should determine suitability of New Vision Displays for each individual application.

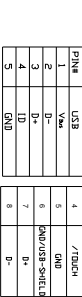


- NOTES:
1. IC: EXC3160 (COB), CHANNEL 58*33
 2. ALL DIMENSIONS IN MM
 3. OPERATING TEMPERATURE: -20°C TO 70°C
 4. STORAGE TEMPERATURE: -30°C TO 80°C
 5. STRAPE BENDING RADIUS IS 110MM MIN.
 6. USB CONNECTOR IS MOLEX 82933-0832 OR EQUIVALENT
 7. ALL MATERIALS MUST BE ROHS COMPLIANT
 8. (K) DIMENSION FOR REFERENCE
 9. THIS PRODUCT IS ROHS COMPLIANT



* 8...CRITICAL DIMENSION MUST MEET THE REQUIREMENT OF DOA CONTROL (DPA+1.33)
 * 0...IMPORTANT CONTROL DIMENSION MUST MEET A TOLERANCE
 (...)...REFERENCE DIMENSION WITHOUT A TOLERANCE AND IS USED FOR INFORMATION PROCESS ONLY

UNIT: mm	GENERAL TOLERANCE:	
3RD ANGLE	XXX = ±0.20	
	ANGLE = ±0.5°	
NOT IN SCALE		
DRAWN BY: Fan Yang	DATE: 2015/24	PART NO.: ASM/P2070M01
CHECKED BY: Remy Zhao	DATE: 2015/24	TITLE: 15.6" CTP WITH/OUT LENS assembly drawing
APPROVED BY:		DRAWING NO.: A1P2070A01-01
		REV: 01
		SH: ND/1/1



MINI USB PIN TABLE

PIN	USB	VM	DESCRIPTION
1	VM	1	VM
2	VM	2	VM
3	DATA	3	DATA
4	DATA	4	DATA
5	DATA	5	DATA

USB PIN TABLE

PIN NO.	DESCRIPTION
1	VM
2	VM
3	DATA
4	DATA
5	DATA



The information contained herein is based upon typical data, New Vision Display makes no warranties expressed or implied as to its accuracy and assumes no liability arising out of its use by others. The user should determine suitability of New Vision Displays for each individual application.