

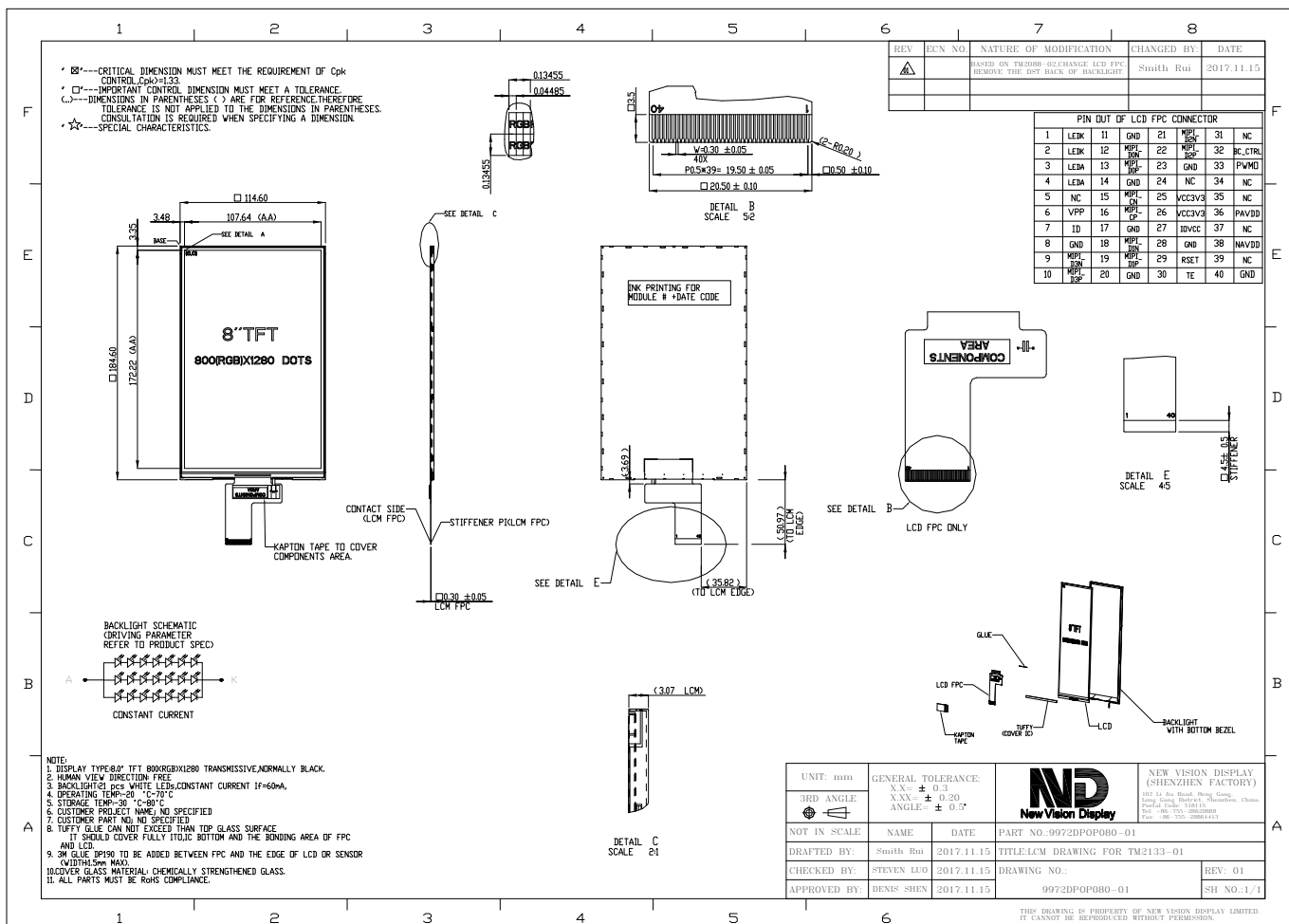
TFT PRODUCT SPECIFICATIONS

800RGB x 1280

16.7M Colors

8.0" Diagonal

Part Number	9972DPOP080H-01
Overall Dimensions	184.60(H) x 114.60(V) x 3.07(T) mm
Active Area	107.64(H) x 172.22(V)mm
Resolution	800 RGB (H) x 1280 (V)
Pixel Size	0.13455(H) X 0.13455(V)mm
Display Colors	16.7M
Display Mode	IPS/Transmissive /Normally Black
LCD Type	a-Si TFT
Contrast Ratio	800:1 (Typ)
Viewing Angles (CR≥10)	80°/80°/80°/80° (Left/Right/Top/Bottom)
View Direction	Viewing angle free
Brightness (I=60mA)	220cd/m ² (Min)
NTSC	60%
Driver IC	NT35521Z or EQU
VDD	3.0~3.6V
Interface	4-lane MIPI DSI
Backlight System	21 White LED ,7 in series ,3 in Parallel
Forward Voltage	22.4V(typ)
Forward Current	60mA (typ)



The information contained herein is based upon typical data, New Vision Display makes no warranties expressed or implied as to its accuracy and assumes no liability arising out of its use by others. The user should determine suitability of New Vision Displays for each individual application.