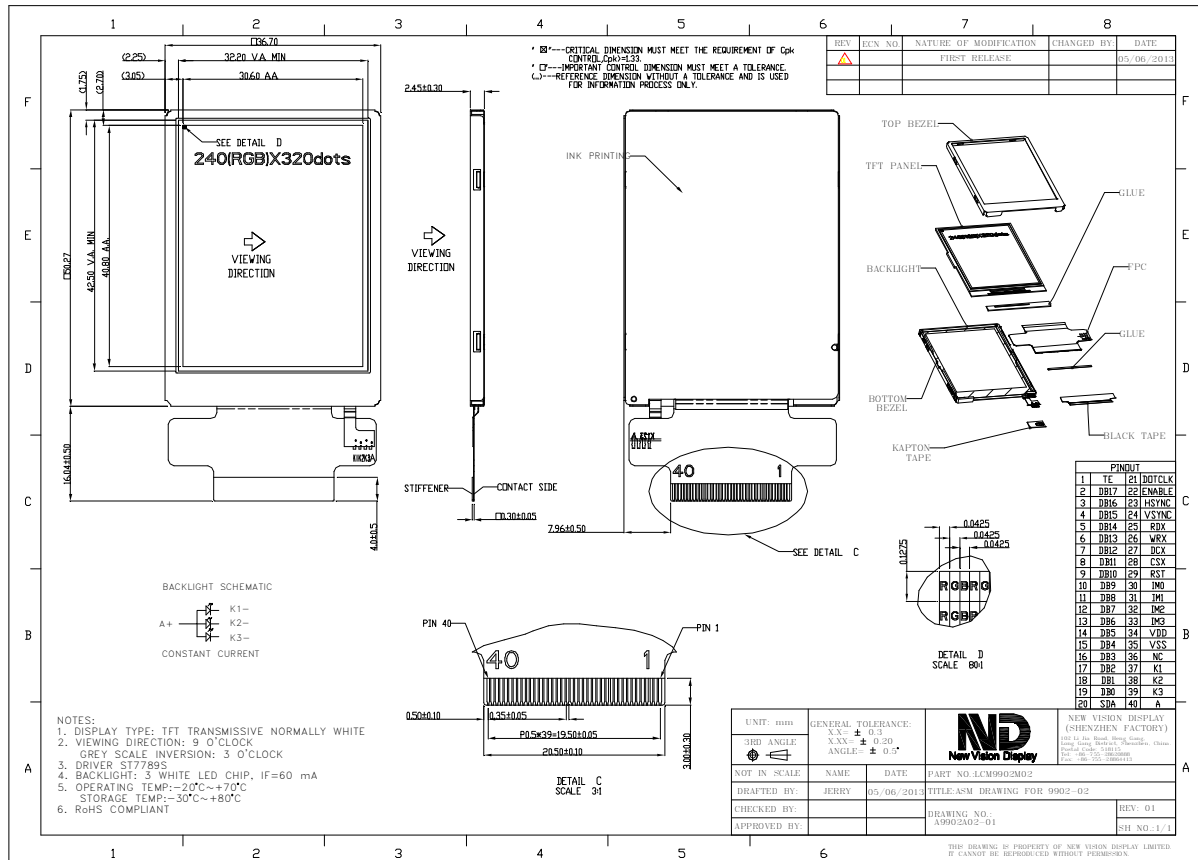


Part Number	9902DPTL020H-02
Overall Dimensions	36.70 (H) x 50.27 (V) x2.45(T)mm
Active Area	30.60 (H) x40.80 (V) mm
Resolution	240RGB (H) x320 (V)
Pixel Size	0.1275(H) x 0.1275(V)mm
Display Colors	262K
Display Mode	TN, Normally White, Transmissive
LCD Type	a-Si TFT
Contrast Ratio	350:1(typ)
View Direction	9 o'clock
Grayscale inversion Direction	3 O'clock
Viewing Angles (CR≥10)	Typ 60°/65°/65°/65° (Left/Right/Top/Bottom) Min 55°/60°/60°/60°(Left/Right/Top/Bottom)
Brightness (I _f =60mA)	500 cd/m ² (typ)
NTSC	57%
Driver IC	ST7789S (or Equivalent)
VDD (Power Supply)	2.4~3.3V
Interface	Parallel CPU /SPI/18-Bit RGB(DE mode) interface
Backlight System	3 White LEDs in parallel
Forward Voltage	3.2V (typ)
Forward Current	60 mA (typ)



The information contained herein is based upon typical data, New Vision Display makes no warranties expressed or implied as to its accuracy and assumes no liability arising out of its use by others. The user should determine suitability of New Vision Displays for each individual application.