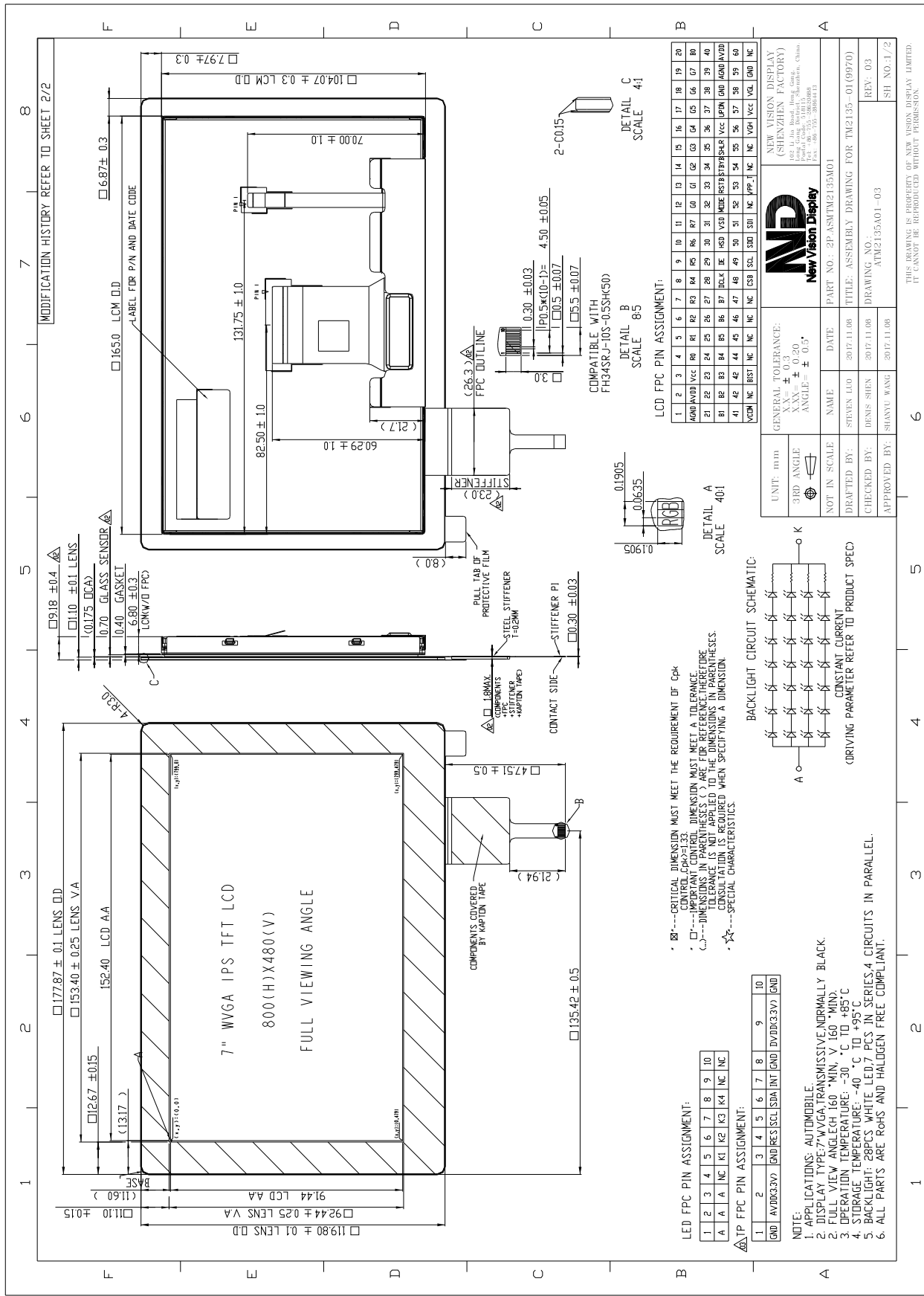


TFT PRODUCT SPECIFICATIONS**800RGB x 480****16.7M Colors****7.0" Diagonal**

Part Number	TM2135SA070C-01
Overall Dimensions	177.87(H) x 119.80(V) x 9.18(T) mm
Active Area	152.40(H) x 91.44(V) mm
Resolution	800 RGB (H) x 480 (V)
Pixel Size	0.1905(H) x 0.1905(V)mm
Display Colors	16.7M
Display Mode	Normally Black
LCD Type	a-Si TFT
Contrast Ratio	1000:1 (Typ)
Viewing Angles (CR≥10)	85°/85°/85°/85° (Left/Right/Top/Bottom)
View Direction	Viewing angle free
Brightness (I=160mA)	600cd/m ² (Min)
NTSC	70%
Driver IC	-
VDD	3.3V
Interface	24 Bits RGB
Backlight System	28 White LED ,7 in series ,4 in Parallel
Forward Voltage	21.3V(typ)
Forward Current	160mA (typ)
Touch Panel Parameter	
Application Size(Diagonal)	7.0
Operation Technology	Projected capacitive
Input Method	Bare or gloved finger
Number of Simultaneous Touches	5
Gesture Support	No
Button Support	No
Touch Controller	Atmel, ATMXT449T-AT
Interface to Host	I2C
I2C Address	0x4A
Surface Treatment	--
Optical Transmittance	>86%
Life of Touches	>10 million over lifetime
Connection Type	ZIF connector
RoHS Compliance	Yes
Response Time/Speed	<15ms
Min. Spacing Between 2 Touches	12
Minimum Touch Area	30
Minimum Touch Pressure	0
Linearity	± 2.0mm at edge and ± 1.5mm at centre

The information contained herein is based upon typical data, New Vision Display makes no warranties expressed or implied as to its accuracy and assumes no liability arising out of its use by others. The user should determine suitability of New Vision Displays for each individual application.



The information contained herein is based upon typical data, New Vision Display makes no warranties expressed or implied as to its accuracy and assumes no liability arising out of its use by others. The user should determine suitability of New Vision Displays for each individual application.