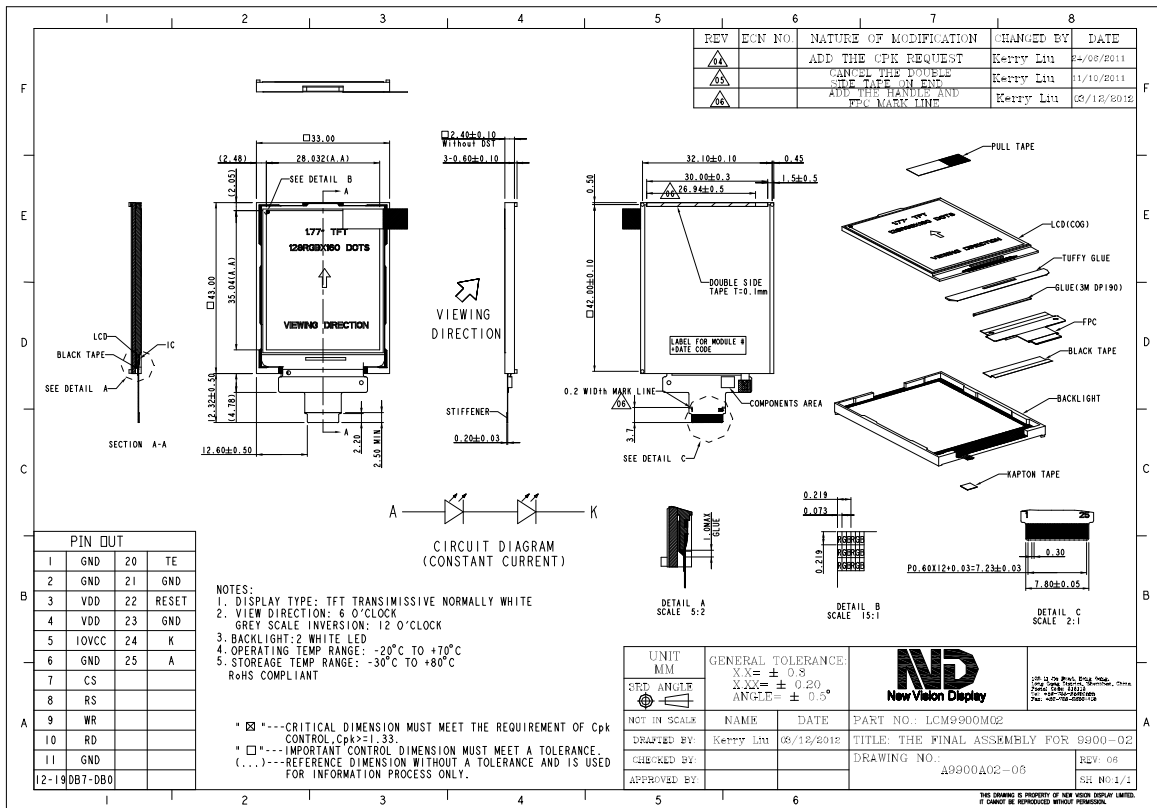


Part Number	9900DPBP018H-02
Overall Dimensions	33.0 (H) x 43.0 (V) x2.4(T)mm
Active Area	28.032 (H) x 35.04 (V) mm
Resolution	128RGB(H) x 160(V) Stripe
Pixel Size	0.219(H) x 0.219(V)mm
Display Colors	262K
Display Mode	TN, Normally White, Transmissive
LCD Type	a-Si TFT
Contrast Ratio	250:1(typ)
View Direction	6 o'clock
Grayscale inversion Direction	12 o'clock
Viewing Angles (CR≥10)	Typ 65°/65°/65°/60° (Left/Right/Top/Bottom) Min 60°/60°/60°/55°(Left/Right/Top/Bottom)
Brightness (I _f =20mA)	200 cd/m ² (typ)
NTSC	58%
Driver IC	ILI9163C or equivalent
VDD (Power Supply)	2.3~3.3V
IOVCC (Logic Voltage)	1.65~3.3V
Interface	Parallel CPU interface
Backlight System	2 White LEDs in Series
Forward Voltage	6.4V (Typ)
Forward Current	20 mA (Typ)



The information contained herein is based upon typical data, New Vision Display makes no warranties expressed or implied as to its accuracy and assumes no liability arising out of its use by others. The user should determine suitability of New Vision Displays for each individual application.