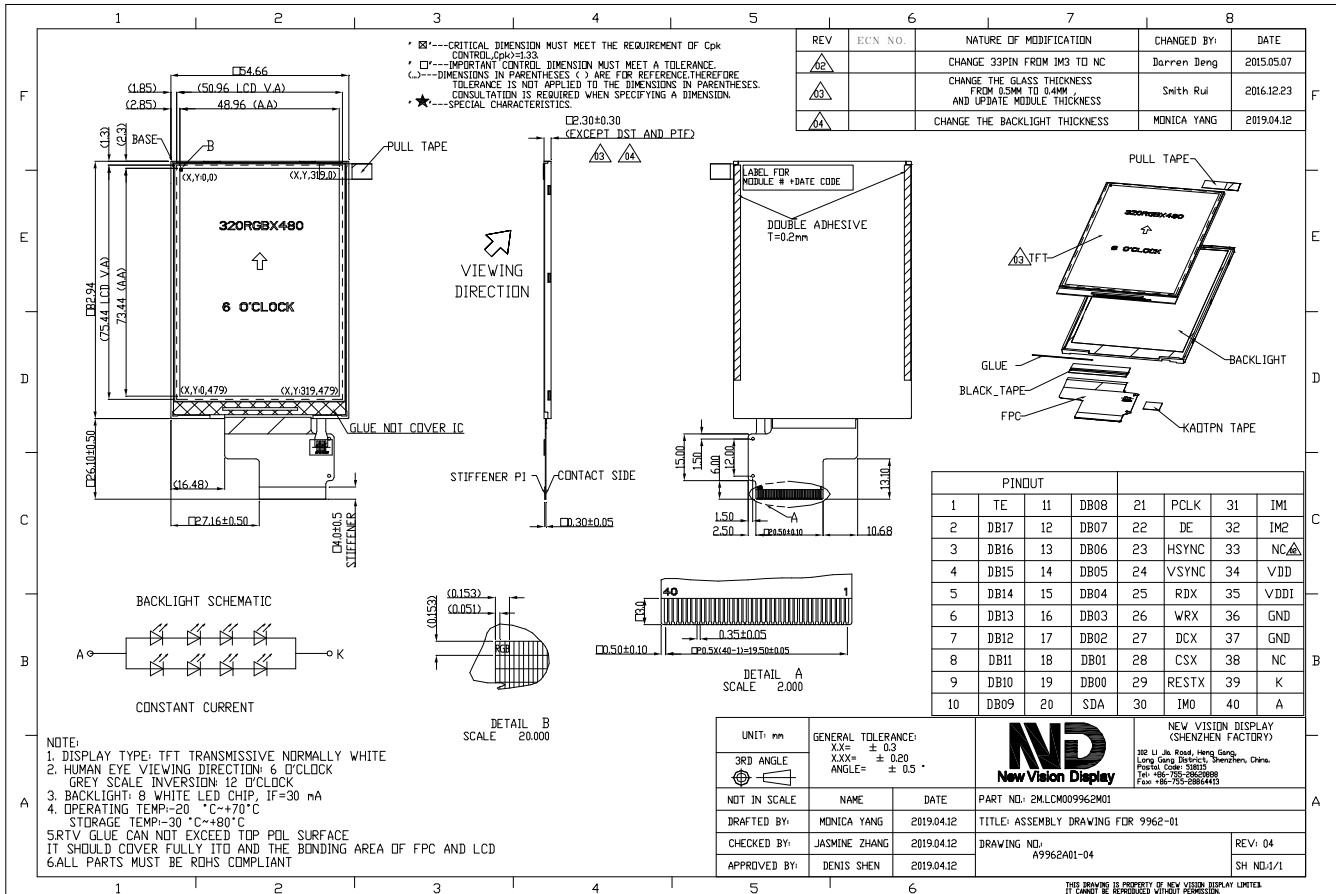


Part Number	9962DPLP035H-01
Overall Dimensions	54.66(H) x 82.94(V) x2.30(D)
Active Area	48.96 (H) x 73.44 (V)
Resolution	320RGB(H) x 480(V)
Pixel Size	0.153(H) x 0.153 (V)
Display Colors	262K
Display Mode	TN/Normally White/ Transmissive
LCD Type	a-Si TFT
Contrast Ratio	500:1(typ)
Viewing Angles (CR≥10)	65°/65°/65°/60° (Left/Right/Top/Bottom)
View Direction	6 O'clock (best image)
Grayscale Reversion	12 O'clock
Brightness (I=30mA)	300cd/m <sup>2</sup> (Typ)
NTSC	55%
Driver IC	ST7796S or EQU
VDD	2.8~3.3V
Interface	SPI / RGB / MCU parallel interface
Backlight System	4 *2 White LEDs
Forward Voltage(BL)	12.8V(typ)
Forward Current(BL)	30mA (typ)



The information contained herein is based upon typical data, New Vision Display makes no warranties expressed or implied as to its accuracy and assumes no liability arising out of its use by others. The user should determine suitability of New Vision Displays for each individual application.