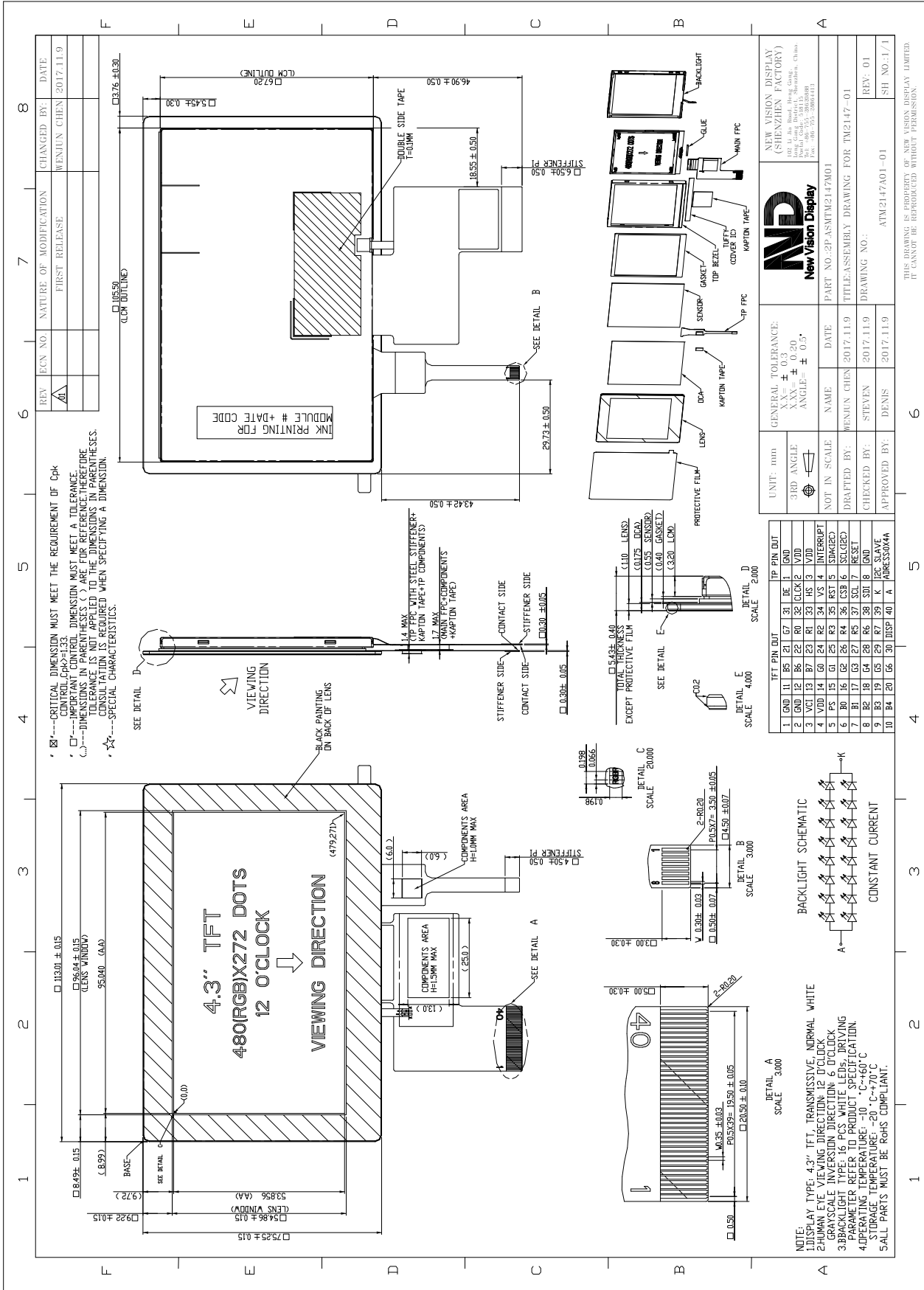


<b>TFT PRODUCT SPECIFICATIONS</b>	<b>480RGB x 272</b>	<b>16.7M Colors</b>	<b>4.3" Diagonal</b>
-----------------------------------	---------------------	---------------------	----------------------

Part Number	TM2147SA043C-01
Overall Dimensions	113.01(H)x75.25(V)x5.43(T)
Active Area	95.04 (H) x 53.856 (V) mm
Resolution	480 RGB (H) x 272 (V) Stripe
Pixel Size	0.198 x 0.198mm
Display Colors	16.7M
Display Mode	TN, Normally White, Transmissive
LCD Type	a-Si TFT
Contrast Ratio	350:1 (Typ)
Viewing Angles (CR≥10)	80°/80°/80°/70° (Left/Right/Top/Bottom)
View Direction	12 o'clock
Grayscale Reversion	6 o'clock
Brightness (I=40mA)	380cd/m <sup>2</sup> (Min)
NTSC	40%
Driver IC	HX8257-A01 or equivalent
VDD	3.0~3.96V
Interface	RGB 24 Bits
Backlight System	8 White LEDs in series and 2 branches in parallel
Forward Voltage	25.6V(typ)
Forward Current	30mA (typ)
<b>Touch Panel Parameter</b>	
Input Method	Bare or gloved finger or thick conductive stylus
Number of simultaneous touches	5 point
Touch controller IC	Atmel mxT336U(COF)
Positional Accuracy	± 1.5mm at 4 edges and 1mm at center
Life of touches	>10 million over lifetime
Connection Type	ZIF Connector
Minimum Touch Pressure	0 N
Optical Transmittance	>=86%
I2C Address	0x4A
Interface to Host	I2C
Operating Voltage	VDD=3.3V

The information contained herein is based upon typical data, New Vision Display makes no warranties expressed or implied as to its accuracy and assumes no liability arising out of its use by others. The user should determine suitability



REV.	ECN NO.	NATURE OF MODIFICATION	CHANGED BY:	DATE:
A1		FIRST RELEASE	WENJUN CHEN	2017.11.9

- CRITICAL DIMENSION MUST MEET THE REQUIREMENT OF Cpk CONTROL, Cpk>=1.33.
- IMPORTANT DIMENSION MUST MEET A TOLERANCE.
- DIMENSIONS IN PARENTHESES ( ) ARE FOR REFERENCE. THEREFORE TOLERANCES ARE NOT APPLIED TO THE DIMENSIONS IN PARENTHESES.
- ALL DIMENSIONS ARE IN MILLIMETERS WHEN SPECIFYING A DIMENSION.
- SPECIAL CHARACTERISTICS.

NEW VISION DISPLAY (SHENZHEN FACTORY)	
UNIT: mm	
GENERAL TOLERANCE:	± 0.3
ANGLE:	± 0.5°
3RD ANGLE	
NOT IN SCALE	
NAME	STEVEN
DATE	2017.11.9
DRAWN BY:	STEVEN
CHECKED BY:	DENIS
APPROVED BY:	DENIS
PART NO.:	2P-ASMTW2147A01
TITLE:	ASSEMBLY DRAWING FOR TW2147-01
DRAWING NO.:	ATW2147A01-01
REV.:	01
SH. NO.:	1/1

THIS DRAWING IS PROPERTY OF NEW VISION DISPLAY LIMITED. IT CANNOT BE REPRODUCED WITHOUT PERMISSION.



The information contained herein is based upon typical data, New Vision Display makes no warranties expressed or implied as to its accuracy and assumes no liability arising out of its use by others. The user should determine suitability