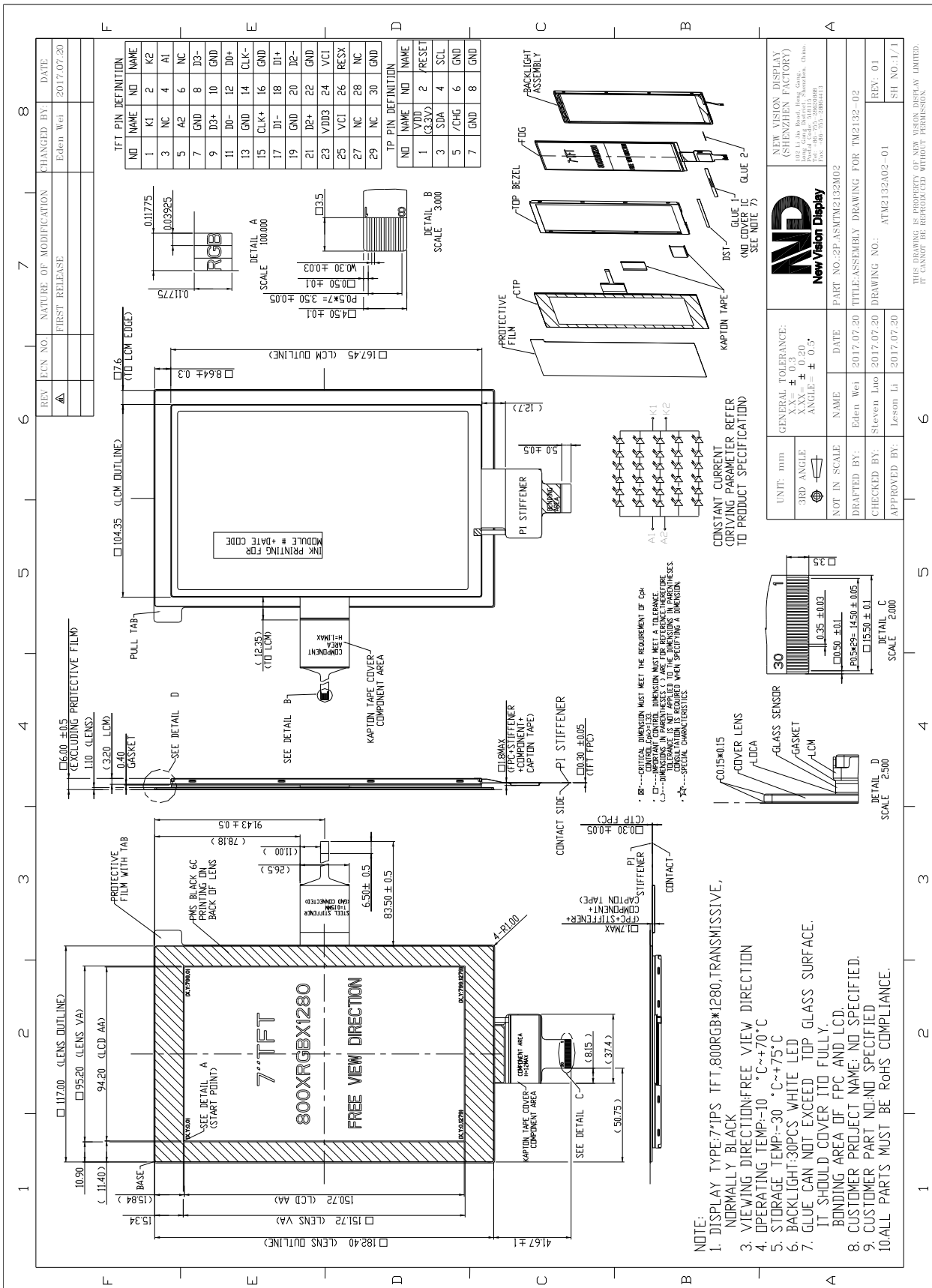


TFT PRODUCT SPECIFICATIONS**800RGB x 1280****16.7M Colors****7.0" Diagonal**

Part Number	TM2132S070L-02
Overall Dimensions	117.00(H) x 182.40(V) x 6.0(T) mm
Active Area	94.20 (H) x 150.72 (V)mm
Resolution	800 RGB (H) x 1280 (V)
Pixel Size	0.11775 (H) x0.11775 (V)mm
Display Colors	16.7M
Display Mode	IPS/Transmissive /Normally Black
LCD Type	a-Si TFT
Contrast Ratio	800:1 (Typ)
Viewing Angles (CR≥10)	85°/85°/85°/85° (Left/Right/Top/Bottom)
View Direction	Viewing angle free
Brightness (I=100mA)	400cd/m ² (Min)
NTSC	55%
Driver IC	NT35521S or EQU
VDD	3.0~3.6V
Interface	4-lane MIPI DSI
Backlight System	30 White LED ,6 in series ,5 in Parallel
Forward Voltage	19.2V(typ)
Forward Current	100mA (typ)
Touch Panel Parameter	
Input Method	Bare or gloved finger or thick conductive stylus
Number of simultaneous touches	5 point
Min. spacing between 2 touches	18mm
Positional Accuracy	+/- 1.5 at center, +/- 2.5 at edge
Minimum Touch Area	30mm ²
Minimum Touch Pressure	0N
Number of touches	>10 million over lifetime
Connection Type	ZIF Connector
Anti-glare surface	No
Optical Transmittance	>85%
Non-Linearity	≅ 3.0%
RoHS Compliance	Yes
Contact Resistance	>20Mohm @ DC25V
Power Consumption	50mW
Interface to Host	I2C
Response Time/Speed	15ms
I2C Address	0X4A
Touch controller	ATMXT224T-MAU
ESD Capability	15KV Air discharge (TP with lens) 8KV contact discharge(TP with lens)
Operating Voltage	3.3V

The information contained herein is based upon typical data, New Vision Display makes no warranties expressed or implied as to its accuracy and assumes no liability arising out of its use by others. The user should determine suitability of New Vision Displays for each individual application.



- NOTE:
1. DISPLAY TYPE: 7IPS TFT, 800RGB*1280, TRANSMISSIVE, NORMALLY BLACK
 2. VIEWING DIRECTION: FREE VIEW DIRECTION
 3. OPERATING TEMP: -10 °C ~ +70 °C
 4. STORAGE TEMP: -30 °C ~ +75 °C
 5. BACKLIGHT: 30PCS WHITE LED
 6. GLUE CAN NOT EXCEED TOP GLASS SURFACE.
 7. IT SHOULD COVER THE FULLY BONDING AREA OF FPC AND LCD.
 8. CUSTOMER PROJECT NAME: NO. SPECIFIED.
 9. CUSTOMER PART NO.: NO. SPECIFIED
 10. ALL PARTS MUST BE ROHS COMPLIANCE.

UNIT: mm	GENERAL TOLERANCE: XX = ± 0.3 XXX = ± 0.20 ANGLE = ± 0.5°
3RD ANGLE	
NOT IN SCALE	
DRAFTED BY: Eden Wei	DATE: 2017.07.20
CHECKED BY: Steven Luo	DATE: 2017.07.20
APPROVED BY: Leson Li	DATE: 2017.07.20

NEW VISION DISPLAY (SHENZHEN FACTORY) New Vision Display (Shenzhen) Co., Ltd. Unit: China, Dongguan, Shimen, Shimen Road, Shimen Tel: 0755-23822000 Fax: 0755-23804111	NEW VISION DISPLAY (SHENZHEN FACTORY) PART NO.: 2P-ASMTM2132M02 TITLE: ASSEMBLY DRAWING FOR TM2132-02
ATM2132A02-01	REV: 01
SH NO.: 1/1	



The information contained herein is based upon typical data, New Vision Display makes no warranties expressed or implied as to its accuracy and assumes no liability arising out of its use by others. The user should determine suitability of New Vision Displays for each individual application.