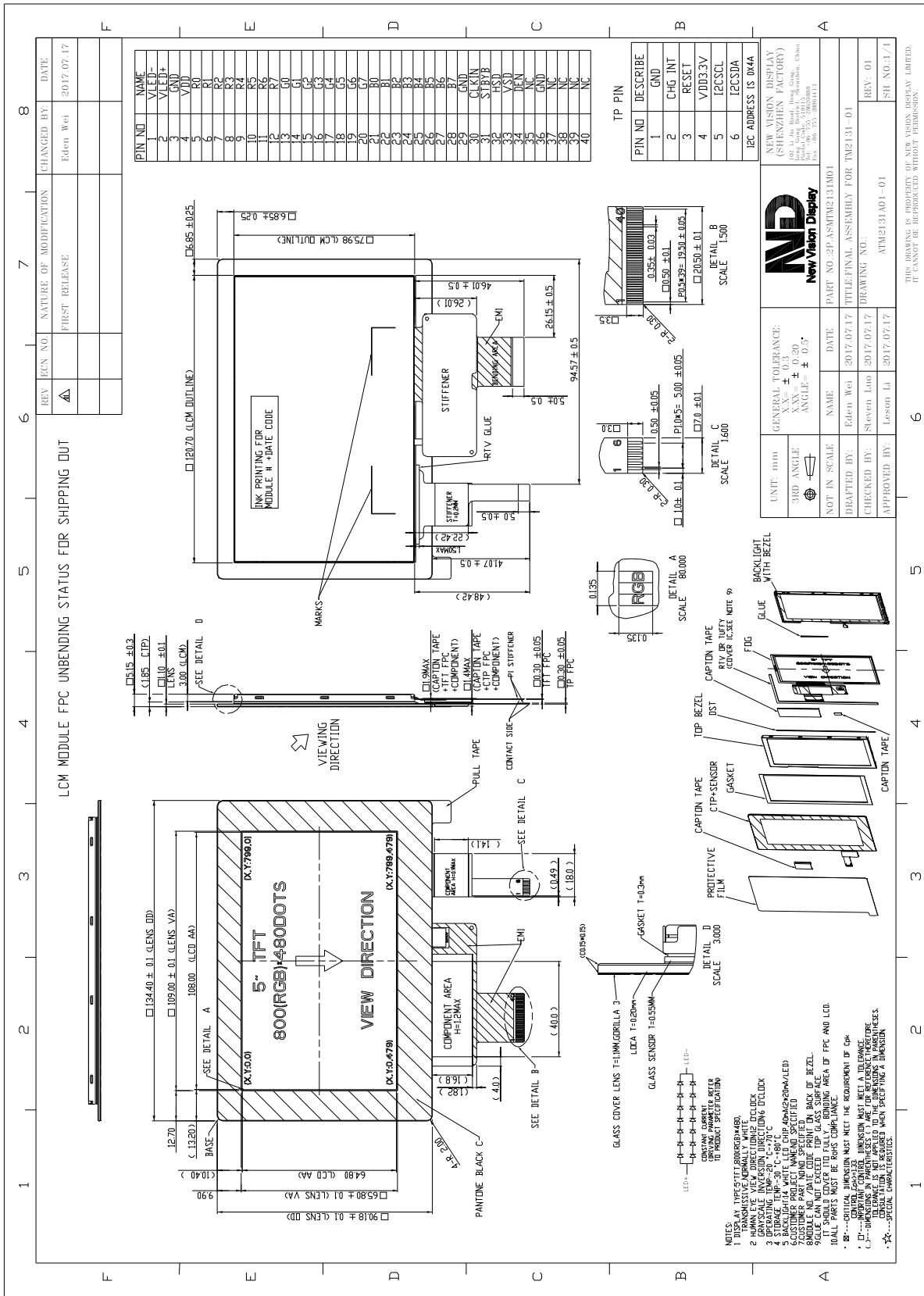


<b>TFT PRODUCT SPECIFICATIONS</b>		<b>800RGB x 480</b>	<b>16.7M Colors</b>	<b>5.0" Diagonal</b>
Part Number	TM2131DA050L-01			
Overall Dimensions	134.40(H)x90.18(V)x5.15(T)			
Active Area	108.00 (H) x 64.80 (V) mm			
Resolution	800 RGB (H) x 480 (V) Stripe			
Pixel Size	0.135 x 0.135mm			
Display Colors	16.7M			
Display Mode	TN, Normally White, Transmissive			
LCD Type	a-Si TFT			
Contrast Ratio	450:1 (Typ)			
Viewing Angles (CR≥10)	80°/80°/80°/70° (Left/Right/Top/Bottom)			
View Direction	12 o'clock			
Grayscale Reversion	6 o'clock			
Brightness (I=40mA)	350cd/m <sup>2</sup> (Min)			
NTSC	40%			
Driver IC	OTA7000A and SPFD6048A			
VDD	3.0~3.6V			
Interface	RGB 24 Bits			
Backlight System	14 White LEDs,7 in series ,2in parallel			
Forward Voltage	22.4V(typ)			
Forward Current	40mA (typ)			
<b>Touch Panel Parameter</b>				
Input Method	Bare or gloved finger or thick conductive stylus			
Number of simultaneous touches	5 point			
Touch controller IC	MXT224T			
Positional Accuracy	± 2.5mm at 4 edges and 1.5mm at center			
Life of touches	>10 million over lifetime			
Connection Type	ZIF Connector			
Minimum Touch Pressure	0 N			
Optical Transmittance	>86%			
I2C Address	0X4A			
ESD Capability	15KV (Air discharge TP with lens)			
Interface to Host	I2C			
Operating Voltage	VDD=3.3V			

The information contained herein is based upon typical data, New Vision Display makes no warranties expressed or implied as to its accuracy and assumes no liability arising out of its use by others. The user should determine suitability of New Vision Displays for each individual application.



The information contained herein is based upon typical data, New Vision Display makes no warranties expressed or implied as to its accuracy and assumes no liability arising out of its use by others. The user should determine suitability of New Vision Displays for each individual application.