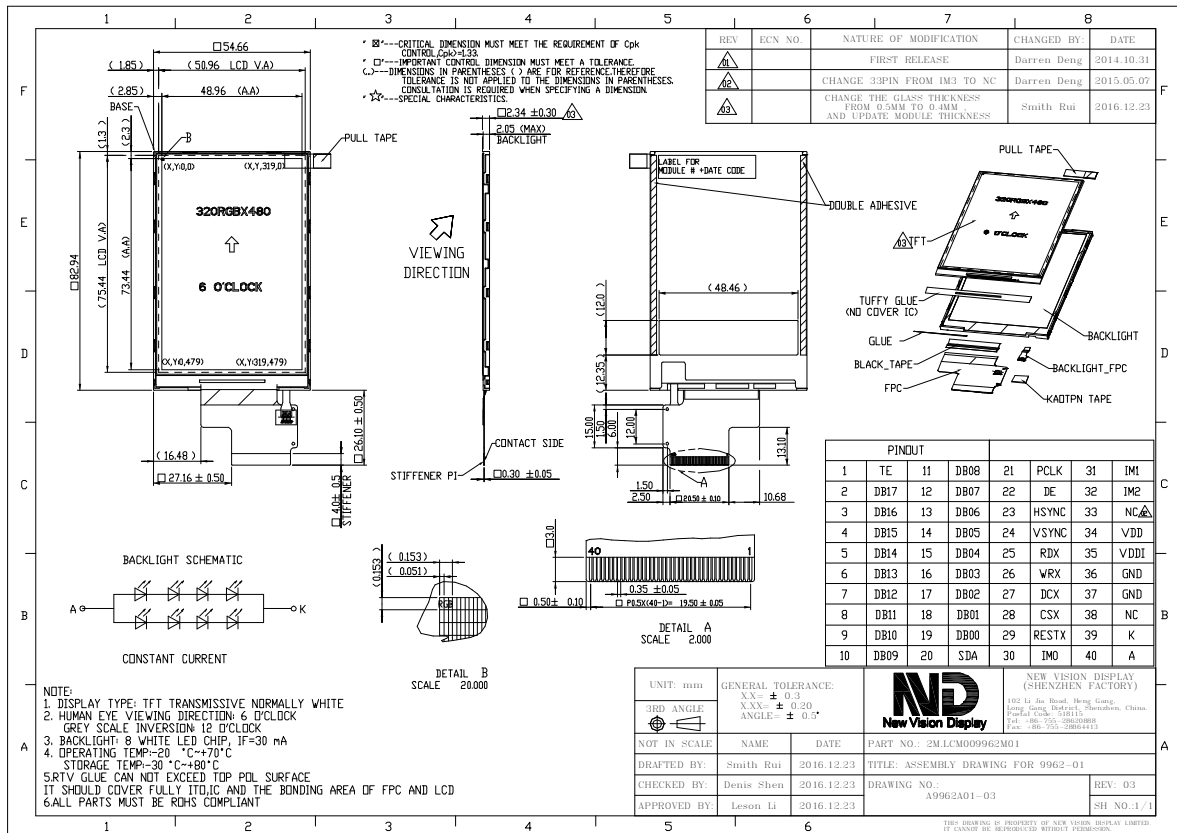


Part Number	9962DPTP035H-01
Overall Dimensions	54.66 (H) x82.94(V) x2.54(T)mm
Active Area	48.96 (H) x 73.44 (V) mm
Resolution	320RGB (H) x480 (V)
Pixel Size	0.153(H) x 0.153(V)mm
Display Colors	262K
Display Mode	TN, Normally White, Transmissive
LCD Type	a-Si TFT
Contrast Ratio	500:1(typ)
View Direction	6 o'clock
Grayscale inversion Direction	12 o'clock
Viewing Angles (CR≥10)	Typ 65°/65°/65°/60° (Left/Right/Top/Bottom) Min 60°/60°/60°/55°(Left/Right/Top/Bottom)
Brightness (I <sub>f</sub> =15mA)	300 cd/m <sup>2</sup> (typ)
NTSC	55%
Driver IC	ST7796S (or Equivalent)
VDD ( Power Supply)	2.4~3.3V
Interface	Parallel CPU /SPI/18-Bit RGB interface
Backlight System	4*2 White LEDs
Forward Voltage	12.8V (typ)
Forward Current	30 mA (typ)



The information contained herein is based upon typical data, New Vision Display makes no warranties expressed or implied as to its accuracy and assumes no liability arising out of its use by others. The user should determine suitability of New Vision Displays for each individual application.