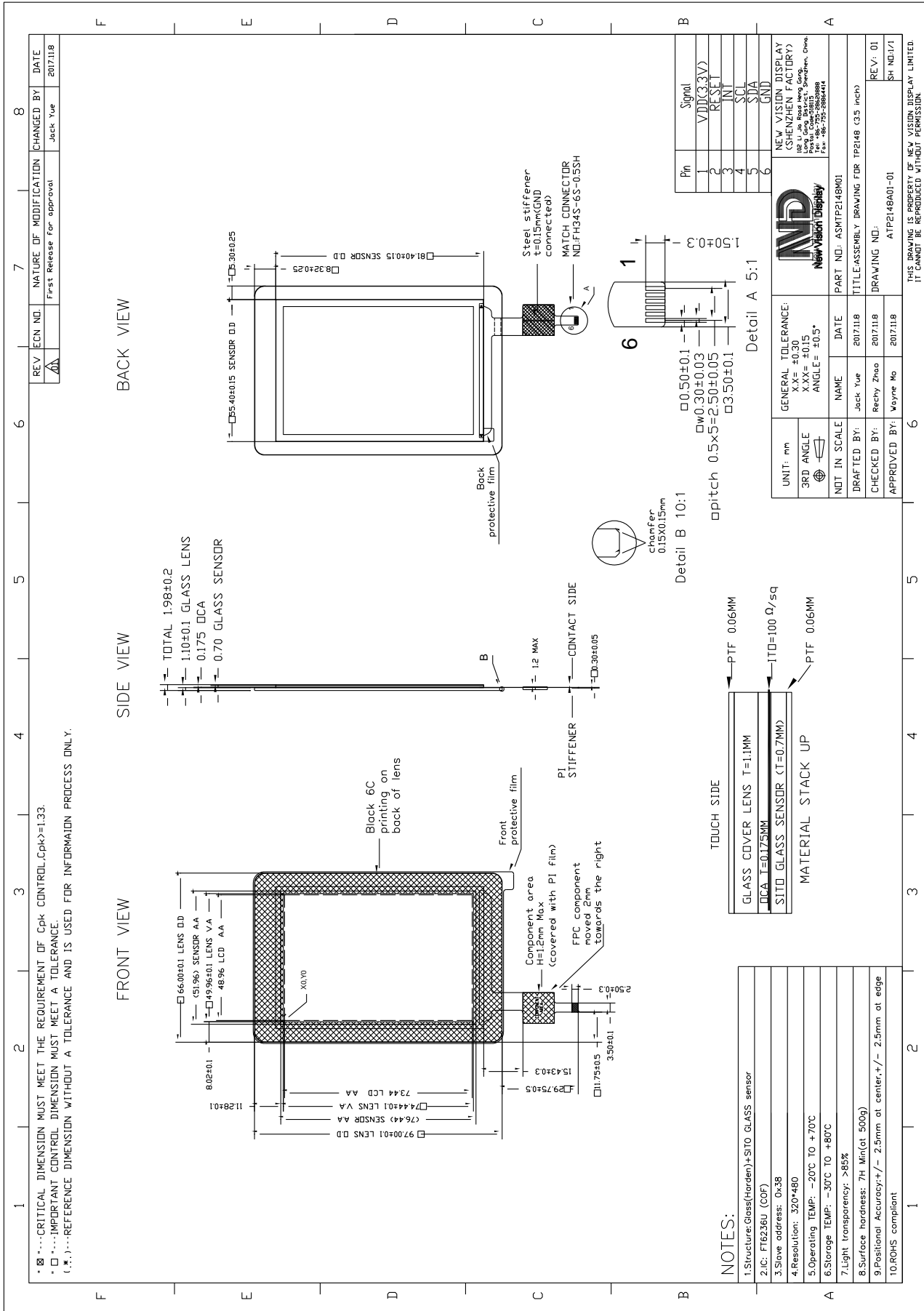


<b>TOCH PANEL SPECIFICATIONS</b>	<b>Projected Capacitive</b>	<b>Glass Substrate</b>	<b>3.5" Diagonal</b>
Part Number	TP2148SA035C-01		
Outline Dimensions of TP sensor	55.40 (W) x 81.40 (H) x 0.7 (D)mm		
Overall Dimensions incl. cover lens	66.00 (W) x 97.00 (H) x 1.1 (D)mm		
Active Area	51.96 (W) x 76.44 (H)mm		
Input Method	Bare or gloved finger or thick conductive stylus		
Number of simultaneous touches	1		
Min. spacing between two touches	18mm		
Positional Accuracy	±2.5mm at center and edges		
Resolution	320*480		
Response Time / Speed	≦ 17.5ms		
Minimum Touch Area	30mm <sup>2</sup>		
Minimum Touch Pressure	0N		
Optical Transmittance	>85%		
Operating temperature	-20°C to +70°C		
Storage temperature	-30°C to +80°C		
Life of touches	>10 million over lifetime		
Surface Hardness	7H		
Anti-glare surface	No		
FPC attachment method	ACF bonding		
FPC bending radius	1mm		
Touch controller IC	FT6236U(COF)		
Interface to Host	I2C		
I2C Address	0x38		
Operating Voltage	3.3V		

The information contained herein is based upon typical data, New Vision Display makes no warranties expressed or implied as to its accuracy and assumes no liability arising out of its use by others. The user should determine suitability of New Vision Displays for each individual application.



The information contained herein is based upon typical data, New Vision Display makes no warranties expressed or implied as to its accuracy and assumes no liability arising out of its use by others. The user should determine suitability of New Vision Displays for each individual application.