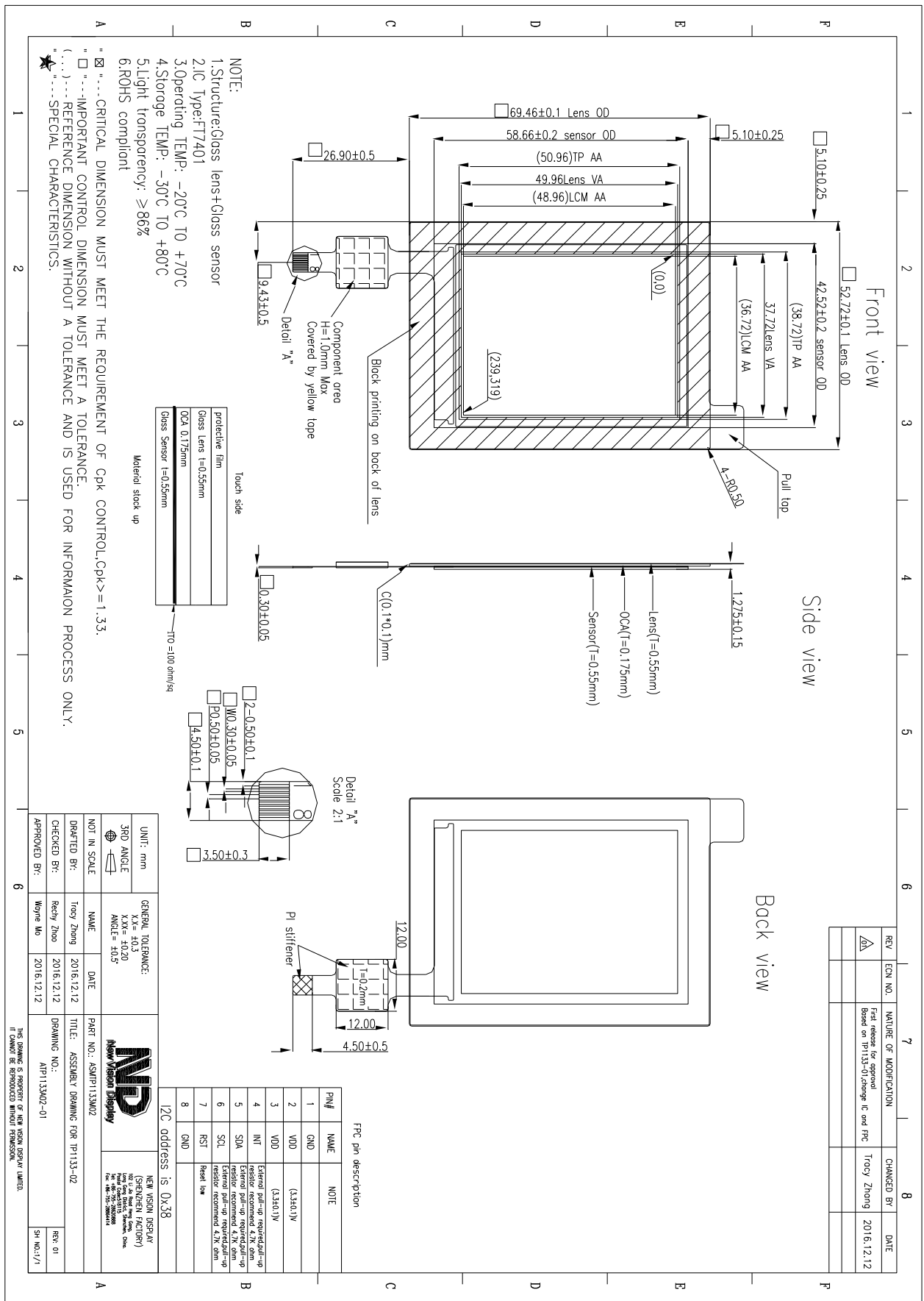


TOCH PANEL SPECIFICATIONS	Projected Capacitive	Glass Substrate	2.4” Diagonal
Part Number	1P.NVDI-TP1133CA024C-02		
Outline Dimensions of TP sensor	42.52(W) x 58.66 (H) x 0.55 (T) mm		
Overall Dimensions incl. cover lens	52.72(W) x 69.46 (H) x 1.25 (T) mm (Can be changed)		
Active Area	38.72(W) x 50.96(H) mm		
Input Method	Finger or Gloved Finger		
Number of simultaneous touches	one and gesture		
Min. spacing between two touches	15mm		
Positional Accuracy	±2.5mm at 4 edges and ±1.5mm at center		
Resolution	240x320		
Response Time / Speed	<15ms		
Minimum Touch Area	30mm ²		
Minimum Touch Pressure	0N		
Optical Transmittance	≥86%		
Operating temperature	-20°C to +70°C, up to 90% RH non-condensing		
Storage temperature	-30°C to +80°C, up to 90% RH non-condensing		
Life of touches	>10 million over lifetime		
Surface Hardness	>6H		
Anti-glare surface	No (available on request)		
FPC attachment method	ACF bonding		
FPC bending radius	1mm		
Touch controller IC	FT7401		
Interface to Host	I2C		
Operating Voltage	3.3V		

The information contained herein is based upon typical data, New Vision Display makes no warranties expressed or implied as to its accuracy and assumes no liability arising out of its use by others. The user should determine suitability of New Vision Displays for each individual application.



The information contained herein is based upon typical data, New Vision Display makes no warranties expressed or implied as to its accuracy and assumes no liability arising out of its use by others. The user should determine suitability of New Vision Displays for each individual application.