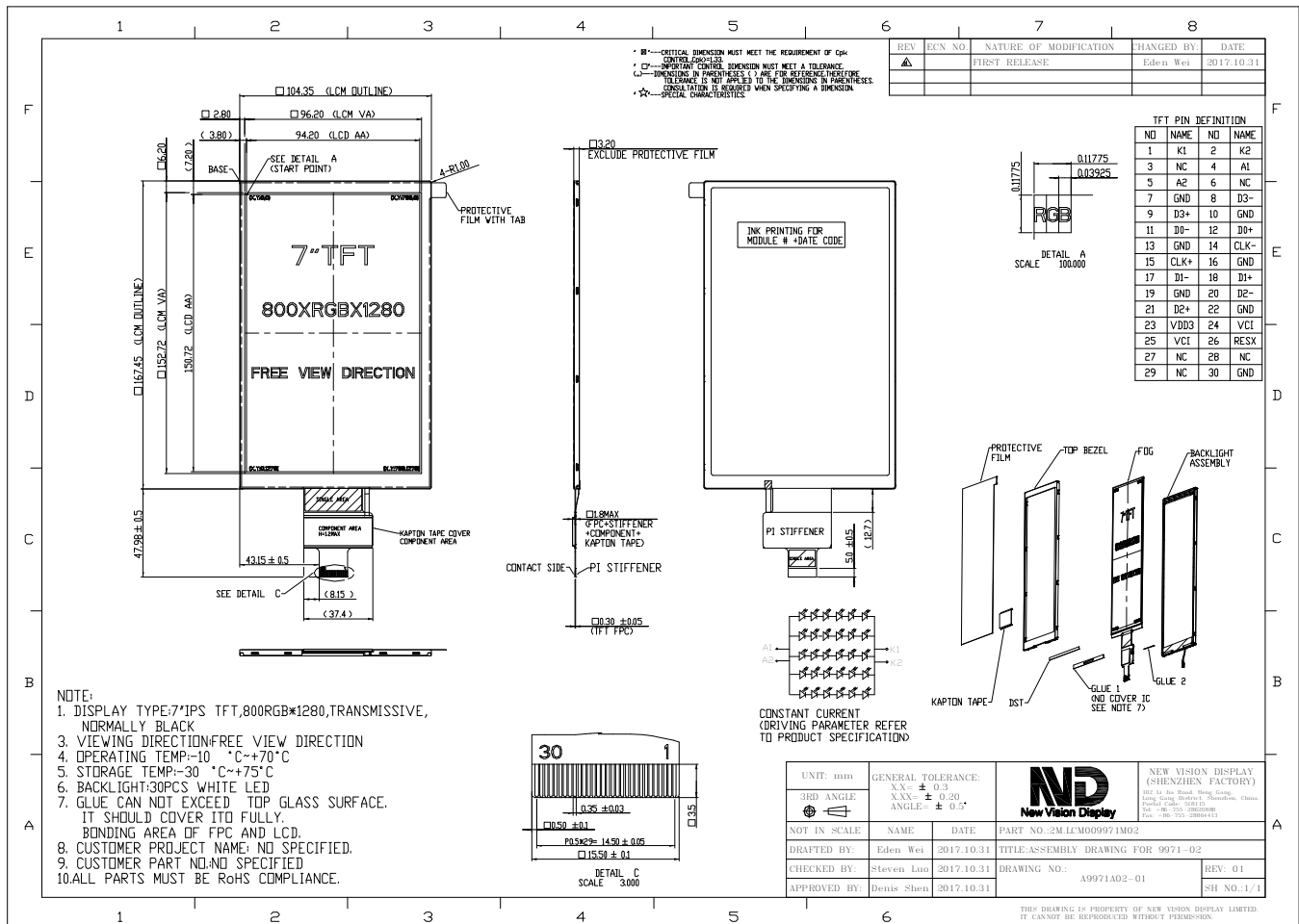


Part Number	1M.NVDI-9971DPOP070H-02
Overall Dimensions	104.35(H) x 167.45(V) x 3.2(T) mm
Active Area	94.20 (H) x 150.72 (V)mm
Resolution	800 RGB (H) x 1280 (V)
Pixel Size	0.11775 (H) x 0.11775 (V)mm
Display Colors	16.7M
Display Mode	IPS/Transmissive /Normally Black
LCD Type	a-Si TFT
Contrast Ratio	800:1 (Typ)
Viewing Angles (CR≥10)	85°/85°/85°/85° (Left/Right/Top/Bottom)
View Direction	Viewing angle free
Brightness (I=100mA)	450cd/m ² (Min)
NTSC	55%
Driver IC	NT35521S or EQU
VDD	3.0~3.6V
Interface	4-lane MIPI DSI
Backlight System	30 White LED ,6 in series ,5 in Parallel
Forward Voltage	19.2V(typ)
Forward Current	100mA (typ)



The information contained herein is based upon typical data, New Vision Display makes no warranties expressed or implied as to its accuracy and assumes no liability arising out of its use by others. The user should determine suitability of New Vision Displays for each individual application.