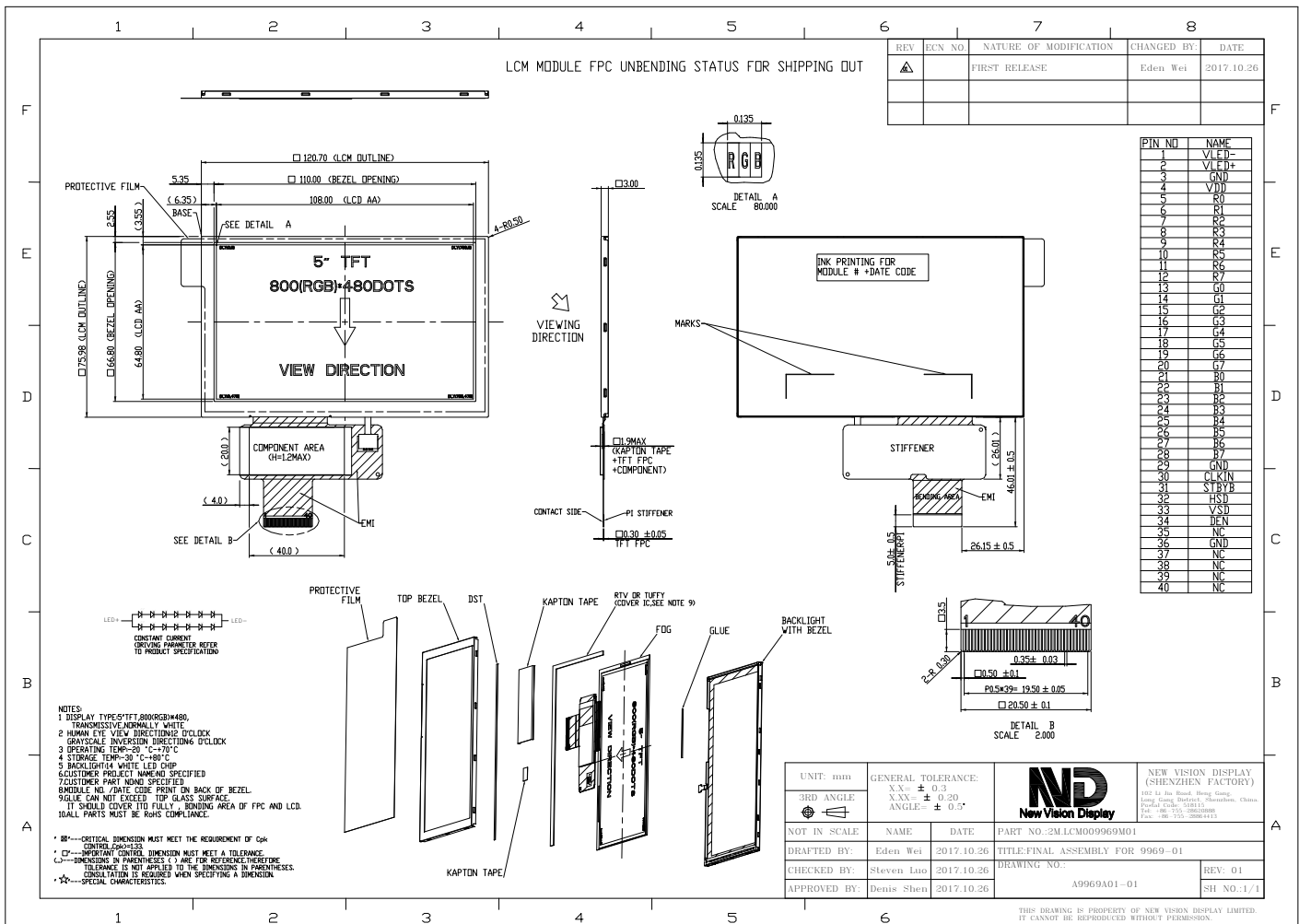


Part Number	9969DPTL050H-01
Overall Dimensions	120.70(H)x75.98(V)x3.00(T)
Active Area	108.00 (H) x 64.80 (V) mm
Resolution	800 RGB (H) x 480 (V) Stripe
Pixel Size	0.135 x 0.135mm
Display Colors	16.7M
Display Mode	TN, Normally White, Transmissive
LCD Type	a-Si TFT
Contrast Ratio	450:1 (Typ)
Viewing Angles (CR≥10)	80°/80°/80°/80° (Left/Right/Top/Bottom)
View Direction	12 o'clock
Grayscale Reversion	6 o'clock
Brightness (I=40mA)	400cd/m ² (Min)
NTSC	TBD
Driver IC	OTA7000A and SPFD6048A
VDD	3.0~3.6V
Interface	RGB 24 Bits
Backlight System	14 White LEDs,7 in series ,2in parallel
Forward Voltage	22.4V(typ)
Forward Current	40mA (typ)



The information contained herein is based upon typical data, New Vision Display makes no warranties expressed or implied as to its accuracy and assumes no liability arising out of its use by others. The user should determine suitability of New Vision Displays for each individual application.