

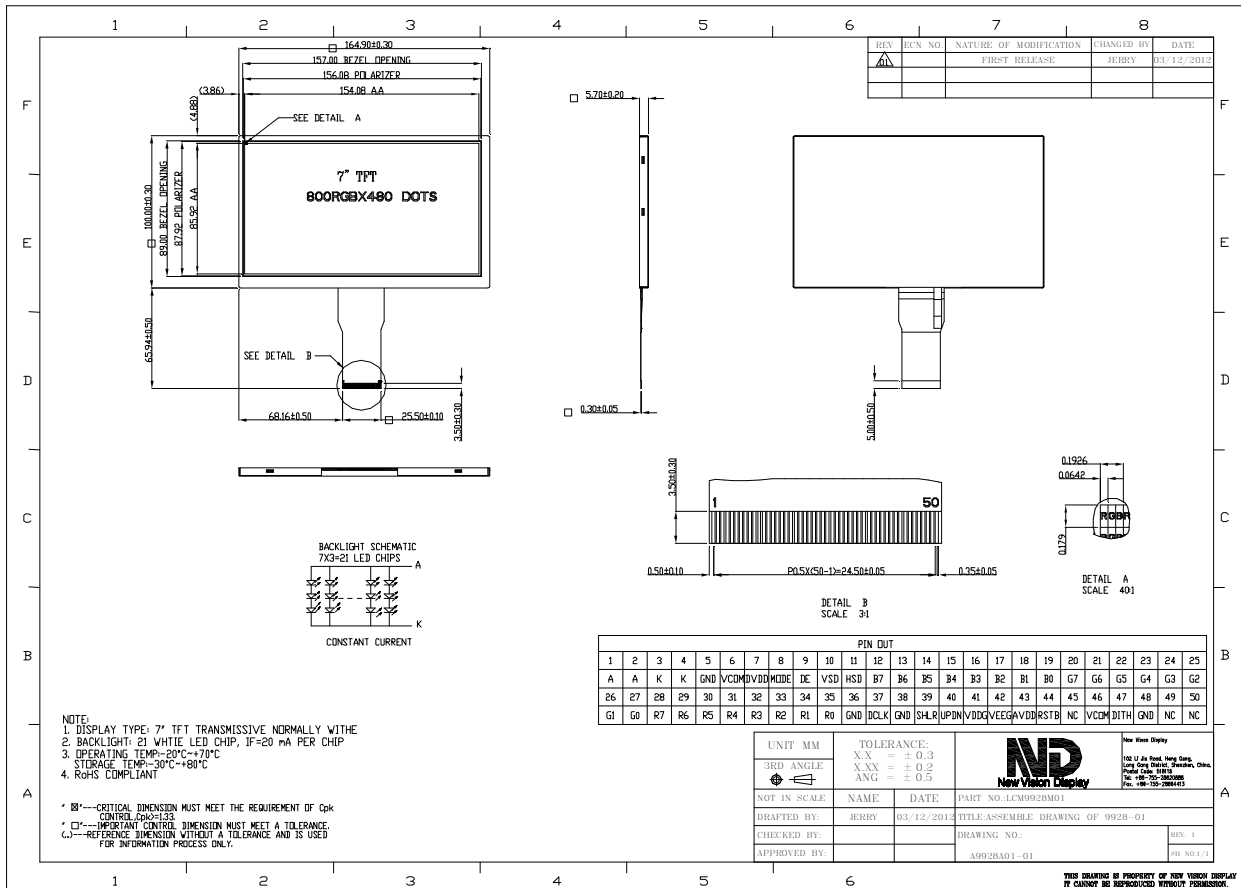
TFT PRODUCT SPECIFICATIONS

800RGBx480

16.7M Colors

7.0" Diagonal

Part Number	9928DPTL070H-01
Overall Dimensions	164.9(H) x 100.0(V) x 5.7(T)mm
Active Area	154.08 (H) x 85.92 (V)mm
Resolution	800 RGB (H) x 480 (V) Stripe
Pixel Size	0.1926(H) x0.1790 (V)
Display Colors	16.7M
Display Mode	TN, Normally White, Transmissive
LCD Type	a-Si TFT
View Direction	12 o'clock
Grayscale inversion Direction	6 o'clock
Viewing Angles (CR≥10)	Typ 65°/65°/60°/65° (Left/Right/Top/Bottom) Min 60°/60°/55°/60°(Left/Right/Top/Bottom)
Contrast Ratio	400:1 (Typ)
Brightness (I _f =20*7mA)	240cd/m ² (Min)
NTSC	50%
DVDD (Power Supply)	3.0~3.6V
AVDD (Analog)	9.4~9.8V
Interface	RGB 24 Bits
Backlight System	21 White LED ,3 in series ,7 in Parallel
Forward Voltage	9.6V(typ)
Forward Current	140 mA (typ)



The information contained herein is based upon typical data, New Vision Display makes no warranties expressed or implied as to its accuracy and assumes no liability arising out of its use by others. The user should determine suitability of New Vision Displays for each individual application.