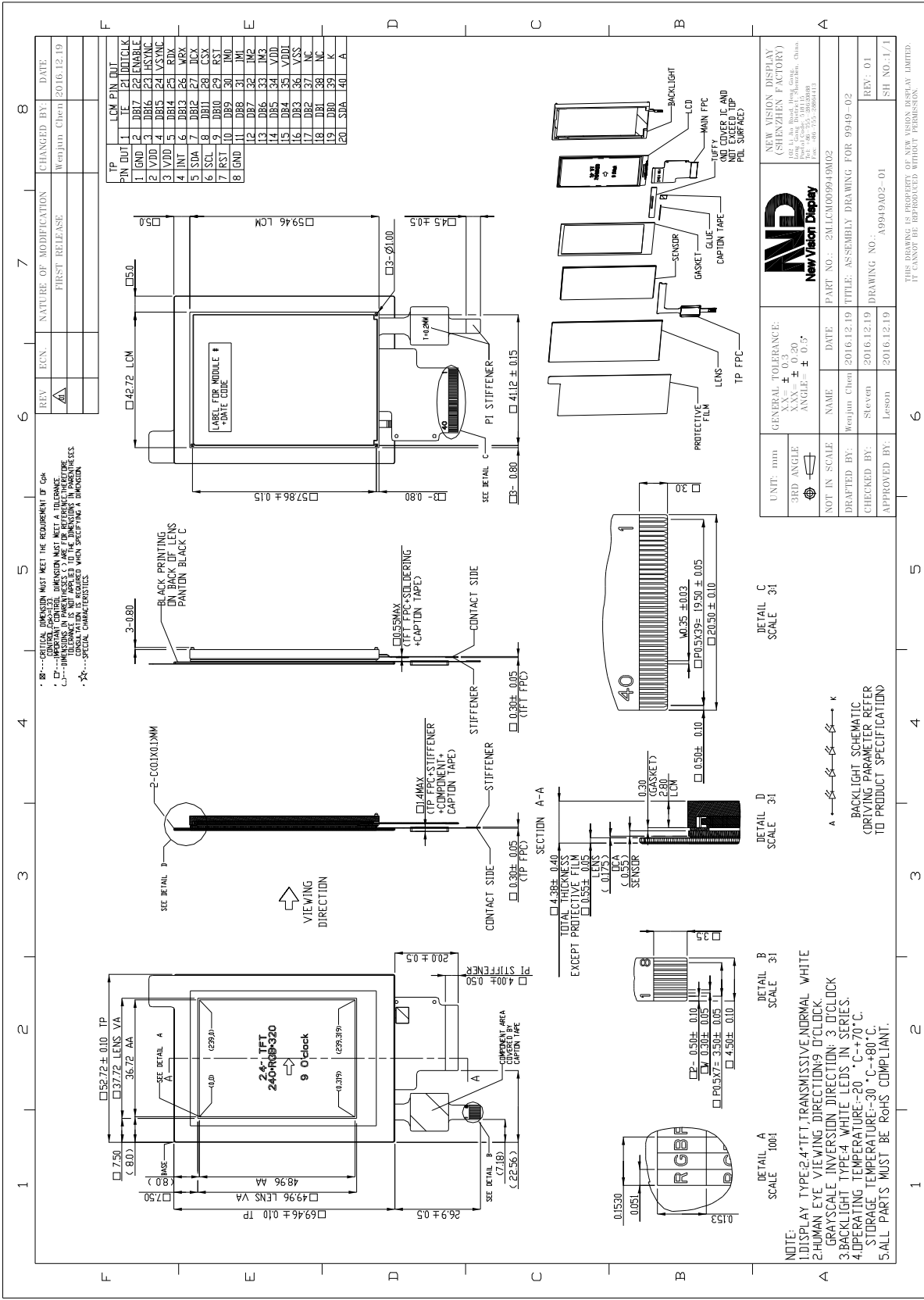


Part Number	9949DPLP024H-02
Overall Dimensions	52.72 (W) x 69.46(H) x 4.38(T) mm
Active Area	36.72 (H) x 48.96 (V) mm
Resolution	240RGB(H) x 320(V) Stripe
Pixel Size	0.153 x 0.153mm
Display Colors	262k
Display Mode	TN, Normally White, Transmissive
LCD Type	a-Si TFT
Contrast Ratio	500:1 (typ)
View Direction	9 o'clock
Grayscale inversion Direction	3 o'clock
Viewing Angles (CR≥10)	Typ 60°/65°/65°/65° (Left/Right/Top/Bottom) Min 55°/60°/60°/60°(Left/Right/Top/Bottom)
Brightness (If=20mA)	480 cd/m ² (min)
NTSC	55%
Driver IC	ST7789S or Equivalent
VDD(Power Supply)	2.4V - 3.3V
Interface	Parallel CPU /SPI/18-Bit RGB interface
Backlight System	4 White LEDs in Series
Forward Voltage	4 x 3.2V (typ)
Forward Current	20 mA (typ)
Touch Panel Parameter	
Input Method	Finger or gloved finger
Number of simultaneous touches	One and gesture
Touch controller IC	FT7401
Min. spacing between two touches	18mm
Positional Accuracy	± 2.5mm at 4 edges and 1.5mm at center
Response Time / Speed	<10msec
Minimum Touch Area	30mm ²
Minimum Touch Pressure	0 N
Optical Transmittance	>87%
I2C Address	0X38
ESD Capability	15KV (Air discharge TP with lens)
Interface to Host	I2C
Operating Voltage	VDD=3.3V

The information contained herein is based upon typical data, New Vision Display makes no warranties expressed or implied as to its accuracy and assumes no liability arising out of its use by others. The user should determine suitability of New Vision Displays for each individual application.



The information contained herein is based upon typical data, New Vision Display makes no warranties expressed or implied as to its accuracy and assumes no liability arising out of its use by others. The user should determine suitability of New Vision Displays for each individual application.