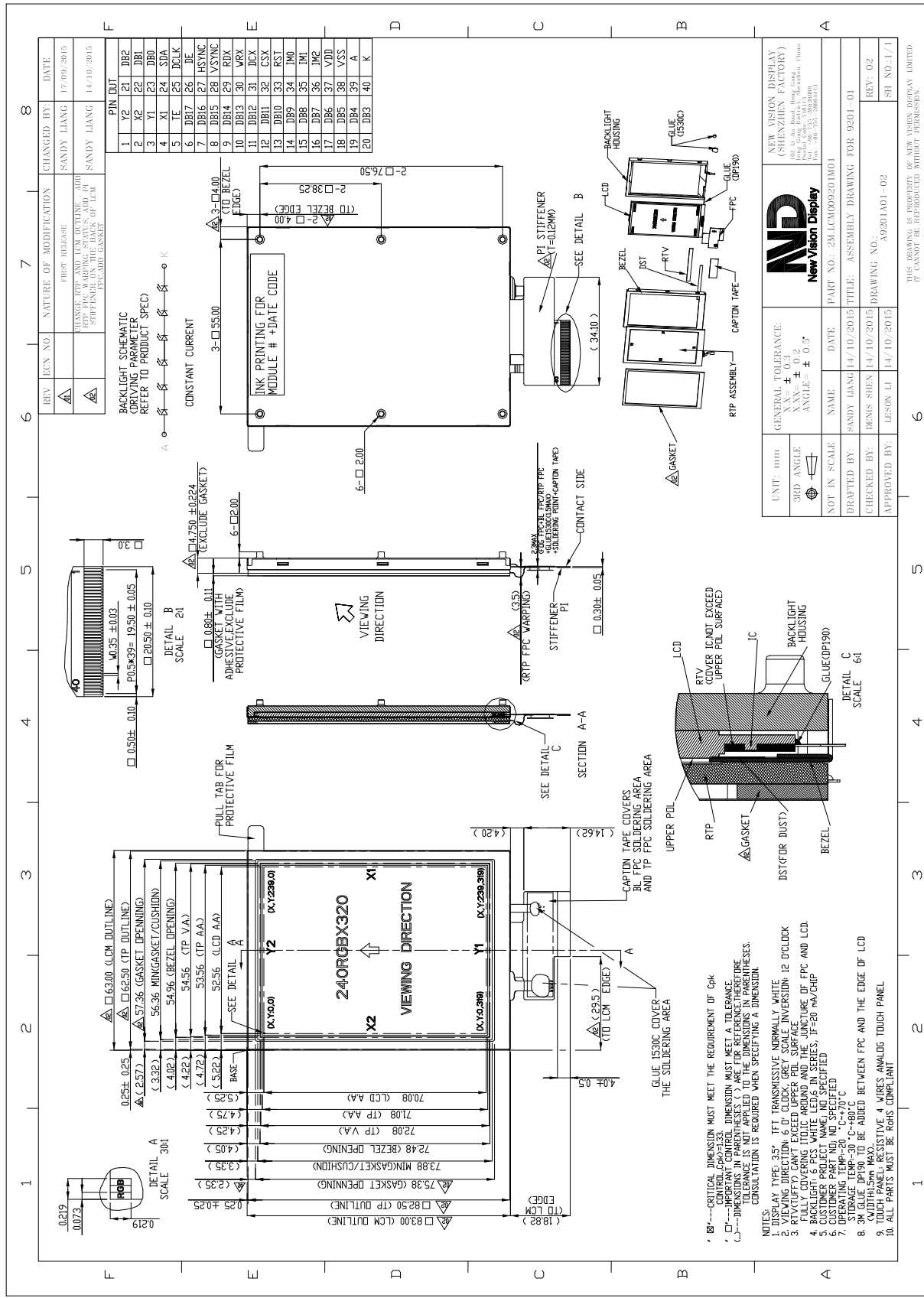


**TFT PRODUCT SPECIFICATIONS****240RGB x 320**

Part Number	1M.BRTM-9201DPBP035H-01
Overall Dimensions	63.00 (H) x 83.00 (V) x 4.75 (T) mm
Active Area	52.56(H) x 70.08(V) mm
<b>TFT LCD Parameter</b>	
Resolution	240 RGB(H) x 320(V) Stripe
Pixel Size	0.219 (H) x 0.219 (V) mm
Display Colors	262K
Display Mode	TN, Normally White, Transmissive
LCD Type	a-Si TFT
Contrast Ratio	400:1 (Typ.)
Viewing Angles (CR≥10)	65°/65°/65°/60°(Left/Right/Top/Bottom)
View Direction	6 o'clock
Brightness (I <sub>f</sub> =20mA)	300 cd/m <sup>2</sup> (Typ.)
NTSC	50% (Typ.)
Driver IC	ST7789VI or EQUI
VDD ( Power Supply)	2.7~3.3V
Interface	18-bit Parallel MPU/SPI/RGB interface
Backlight System	6 White LEDs in Series
Forward Voltage	18.6 V (Typ.)
Forward Current	20 mA (Typ.)
<b>Resistive Touch Panel Parameter</b>	
Touch panel type	4-wires resistive touch panel
Linearity	1.5% (Max.)
Terminal Resistance	200~500 Ω (X direction), 300~900 Ω (Y direction)
Insulation Resistance	20M Ω (Min.)
Voltage	5V (Max.)
Chattering	15ms (Max.)
Activation Force	100g (Max.)
Durability-surface scratching	100,000 times (Min.)
Durability-surface pitting	1,000,000 times (Min.)
Surface hardness	3H (Min.)

The information contained herein is based upon typical data, NVD makes no warranties expressed or implied as to its accuracy and assumes no liability arising out of its use by others. The user should determine suitability of NVD for each individual application.



REV	ECN NO.	NATURE OF MODIFICATION	CHANGED BY	DATE
1		FIRST RELEASE	SANDY LIANG	17/09/2015
2		CHANGE RTP AND LCM OUTLINE, ADD RTP, FPC WELDING STATUS, ADD PULL TAB FOR PROTECTIVE FILM OF LCM	SANDY LIANG	14/10/2015

PIN OUT	
1	Y2
2	DB2
3	Y1
4	DB1
5	Y1
6	DB1
7	DB17
8	DB15
9	DB14
10	DB13
11	DB12
12	DB11
13	DB10
14	DB9
15	DB8
16	DB7
17	DB6
18	DB5
19	DB4
20	DB3

BACKLIGHT SCHEMATIC DRIVING PARAMETER REFER TO PRODUCT SPEC

CONSTANT CURRENT

INK PRINTING FOR MODULE # + DATE CODE

NEW VISION DISPLAY (SHENZHEN FACTORY) 102 Lu An Road, Hong Kong, China 1001000, Shenzhen, China TEL: 86-755-28008111 FAX: 86-755-28008111	
GENERAL TOLERANCE: X ± 0.3 Y ± 0.2 ANGLE ± 0.5°	PART NO.: 2M.LCM009201M01 TITLE: ASSEMBLY DRAWING FOR 9201-01
DRAFTED BY: SANDY LIANG/14/10/2015 CHECKED BY: DENNIS SHEN/14/10/2015 APPROVED BY: LESON LI/14/10/2015	DRAWING NO.: A9201M01-02 REV: 02 SHE NO.1/1

- NOTES:
- DISPLAY TYPE: 35" TFT TRANSMISSIVE NORMALLY WHITE
  - BACKLIGHT TYPE: LED INVERSION 12 D/CLOCK
  - RTP (RTV) CAN EXCEED UPPER PDL SURFACE
  - FULLY COVERING ITOIC AROUND AND THE JUNCTION OF FPC AND LCD
  - BACKLIGHT: 6 PPS WHITE LED 6 IN SERIES; IF=20 mA/CHIP
  - CUSTOMER PROJECT NAME AND SPECIFIED
  - OPERATING TEMP: -20 °C~+70 °C
  - STORAGE TEMP: -30 °C~+80 °C
  - 3M GLUE JPP190 TO BE ADDED BETWEEN FPC AND THE EDGE OF LCD
  - TOUCH PANEL: RESISTIVE 4 WRES ANALOG TOUCH PANEL
  - ALL PARTS MUST BE ROHS COMPLIANT

THIS DRAWING IS PROPERTY OF NEW VISION DISPLAY LIMITED. IT CANNOT BE REPRODUCED WITHOUT PERMISSION.