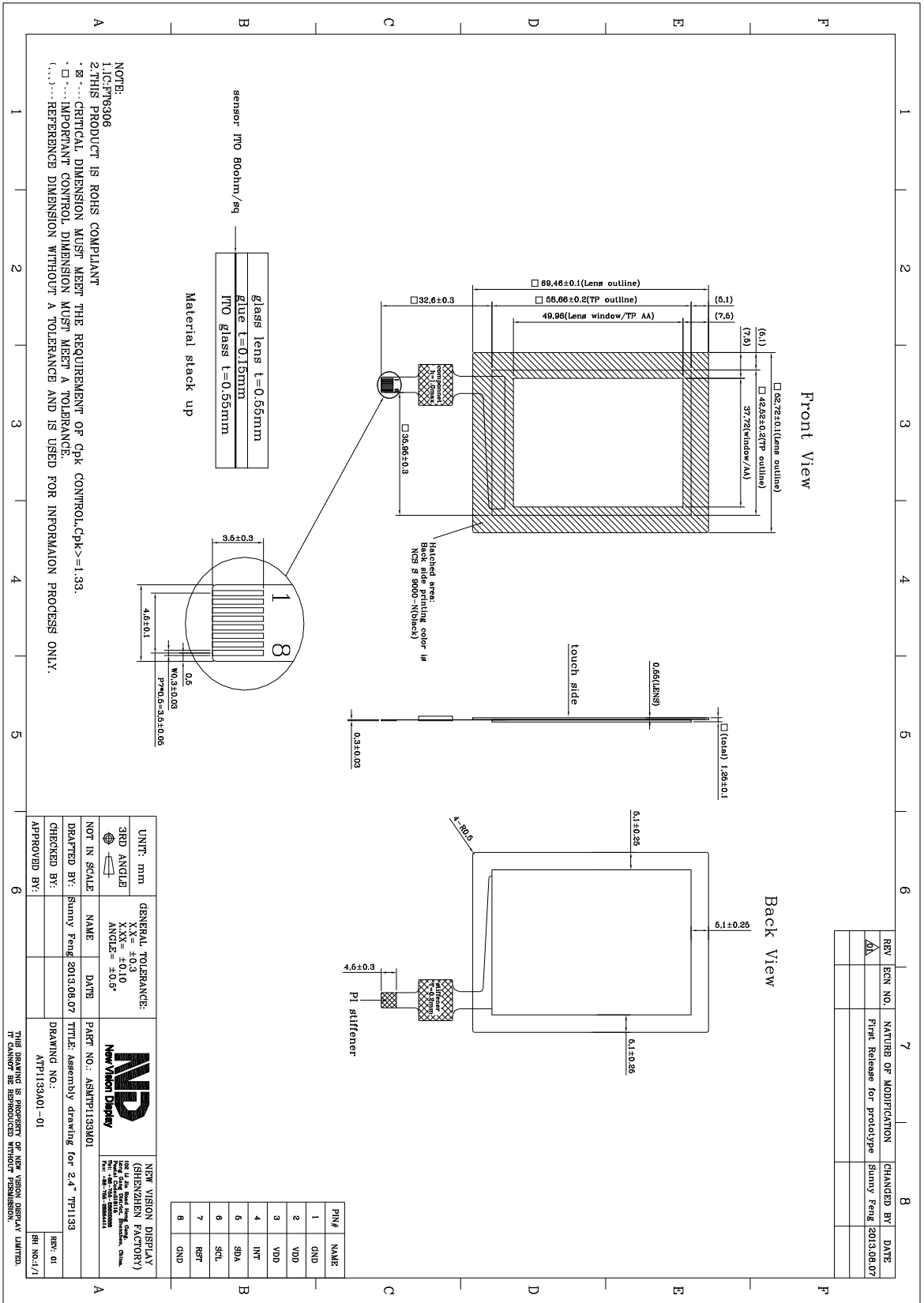


TOUCH PANEL SPECIFICATIONS	Projected Capacitive	Glass Substrate	2.4" Diagonal
-----------------------------------	-----------------------------	------------------------	----------------------

Part Number	NVDS-TP1133DA024S-01
Outline Dimensions of TP sensor	42.52(W) x 58.66 (H) x 0.55 (T) mm
Overall Dimensions incl. cover lens	52.72(W) x 69.46 (H) x 1.25 (T) mm (Can be changed)
Active Area	37.72 (W) x 49.96(H) mm
Input Method	Finger or Gloved Finger
Number of simultaneous touches	one and gesture
Min. spacing between two touches	15mm
Positional Accuracy	± 2.5mm at 4 edges and ±1.5mm at center
Touch System Resolution	<0.2mm
Response Time / Speed	<10msec
Minimum Touch Area	30mm ²
Minimum Touch Pressure	0 N
Optical Transmittance	>90%
ITO resistivity	80 Ω/□
Index matching	No (available on request)
Anti-glare surface	No (available on request)
Operating temperature	-20°C to +70°C, up to 90% RH non-condensing
Storage temperature	-30°C to +80°C, up to 90% RH non-condensing
Number of touches	>10 million over lifetime
Surface Hardness	>6H
FPC* attachment method	ACF bonding
FPC pull-off strength	>50g/mm
FPC bending radius	1mm
Touch controller	FT6306
Interface to Host	I2C
Operating Voltage	3.3V
Power consumption	Idle mode: <0.5mW, Active mode <50mW

* FPC shape customized



REV	ECN NO.	NATURE OF MODIFICATION	CHANGED BY	DATE
Δ		First Release for prototype	Sunny Feng	2013.08.07

Pin#	NAME
1	GND
2	VDD
3	VDD
4	INT
6	S0A
6	S0L
7	RST
8	GND

GENERAL TOLERANCE:
 XX = ±0.3
 XXX = ±0.10
 ANGLE = ±0.5°

UNIT: mm
3RD ANGLE

NOT IN SCALE

DRAWN BY: Sunny Feng 2013.08.07
CHECKED BY:
APPROVED BY:

PART NO.: ASMTF1133A01
TITLE: Assembly drawing for 2.4" TP1133

DRAWING NO.: A7P1133A01-01
REV: 01
REV NO.: /1

NEW VISION DISPLAY (SHENZHEN FACTORY)
 No. 11, 1st Floor, Xixiang Industrial Building, Xixiang, Xixiang, Shenzhen, China.
 Tel: +86-755-26666666
 Fax: +86-755-26666666

THIS DRAWING IS PROPERTY OF NEW VISION DISPLAY LIMITED. IT CANNOT BE REPRODUCED WITHOUT PERMISSION.