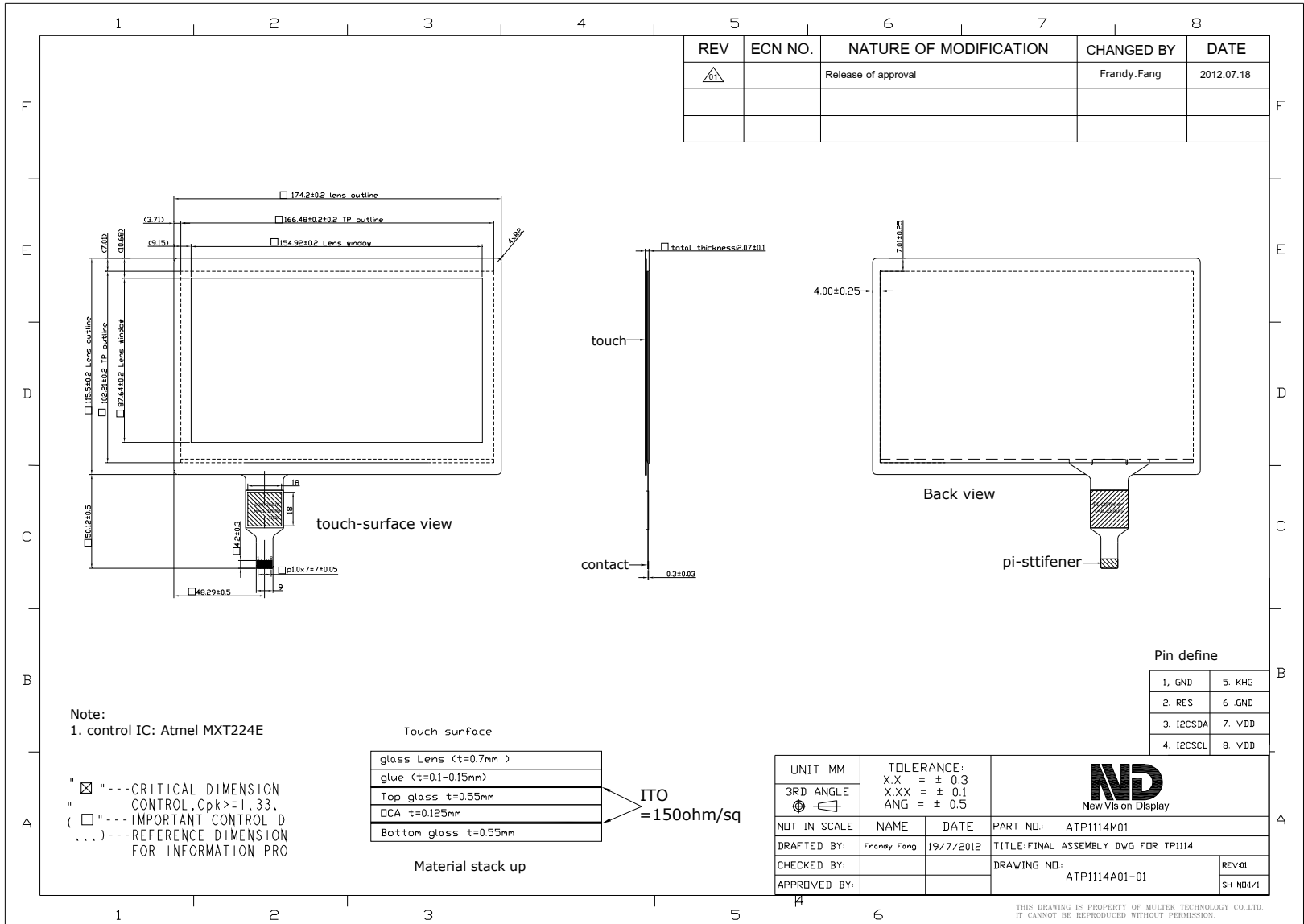


TOUCH PANEL SPECIFICATIONS	Projected Capacitive	Glass Substrate	7.0" Diagonal
-----------------------------------	-----------------------------	------------------------	----------------------

Part Number	FLXH-TP1114PGG070S01
Outline Dimensions of TP sensor	166.48(W) x 102.21 (H) x 1.23 (T) mm
Overall Dimensions incl. cover lens	174.2(W) x 115.5 (H) x 2.07 (T) mm (Can be changed)
Active Area	154.92(W) x 87.64(H) mm
Input Method	Finger or Gloved Finger
Number of simultaneous touches	10 max
Min. spacing between two touches	18mm
Positional Accuracy	± 1.5mm at 4 edges and ±1.0mm at center
Touch System Resolution	<0.2mm
Response Time / Speed	<12msec
Minimum Touch Area	30mm ²
Minimum Touch Pressure	0 N
Optical Transmittance	>90%
ITO resistivity	150 Ω/□
Index matching	No (available on request)
Anti-glare surface	No (available on request)
Operating temperature	-35°C to +85°C, 35%- 70% RH non-condensing
Storage temperature	-40°C to +90°C, 35%- 70% RH non-condensing
Number of touches	>10 million over lifetime
Surface Hardness	>6H
FPC* attachment method	ACF bonding
FPC pull-off strength	>50g/mm
FPC bending radius	1mm
Touch controller	MXT224E-MAH
Interface to Host	I2C
Operating Voltage	3.3V
Power consumption	Idle mode: <0.5mW, Active mode <50mW

* FPC shape customized



THIS DRAWING IS PROPERTY OF MULTIX TECHNOLOGY CO. LTD.
IT CANNOT BE REPRODUCED WITHOUT PERMISSION.