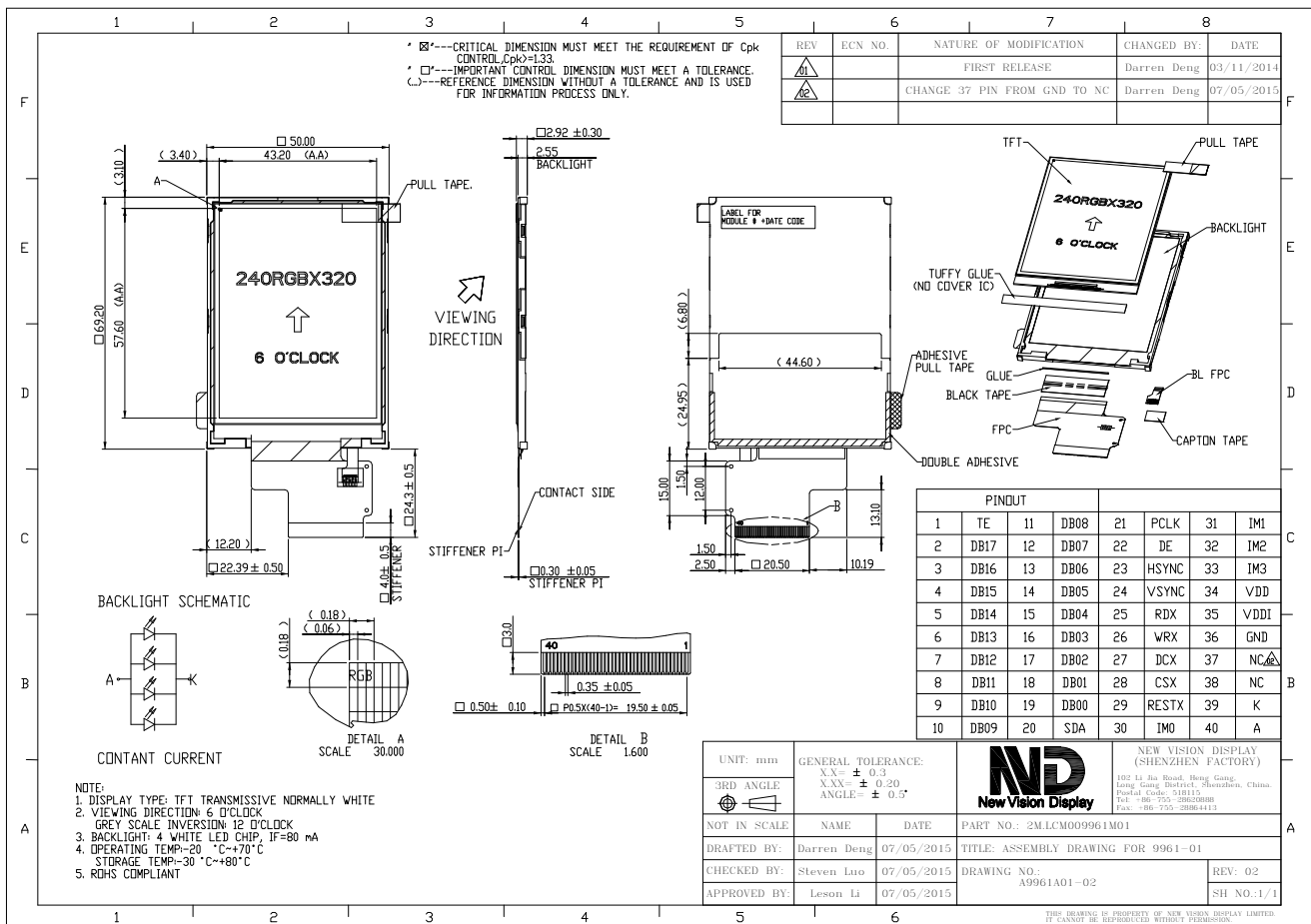


Part Number	9961DPLP028H-01
Overall Dimensions	50.0 (W) x 69.2(H) x 2.92(T) mm
Active Area	43.2 (H) x 57.6 (V) mm
Resolution	240RGB(H) x 320(V) Stripe
Pixel Size	0.18 x 0.18mm
Display Colors	262k
Display Mode	TN, Normally White, Transmissive
LCD Type	a-Si TFT
Contrast Ratio	480:1 (typ)
View Direction	6 o'clock
Grayscale inversion Direction	12 o'clock
Viewing Angles (CR≥10)	Typ 65°/65°/65°/60° (Left/Right/Top/Bottom) Min 60°/60°/60°/55°(Left/Right/Top/Bottom)
Brightness (I <sub>f</sub> =20mA)	480 cd/m <sup>2</sup> (min)
NTSC	55%
Driver IC	ST7789V or Equivalent
VDD( Power Supply)	2.4V - 3.3V
Interface	Parallel CPU /SPI/18-Bit RGB interface
Backlight System	4 White LEDs in Parallel
Forward Voltage	3.2V (typ)
Forward Current	80 mA (typ)



The information contained herein is based upon typical data, New Vision Display makes no warranties expressed or implied as to its accuracy and assumes no liability arising out of its use by others. The user should determine suitability of New Vision Displays for each individual application.