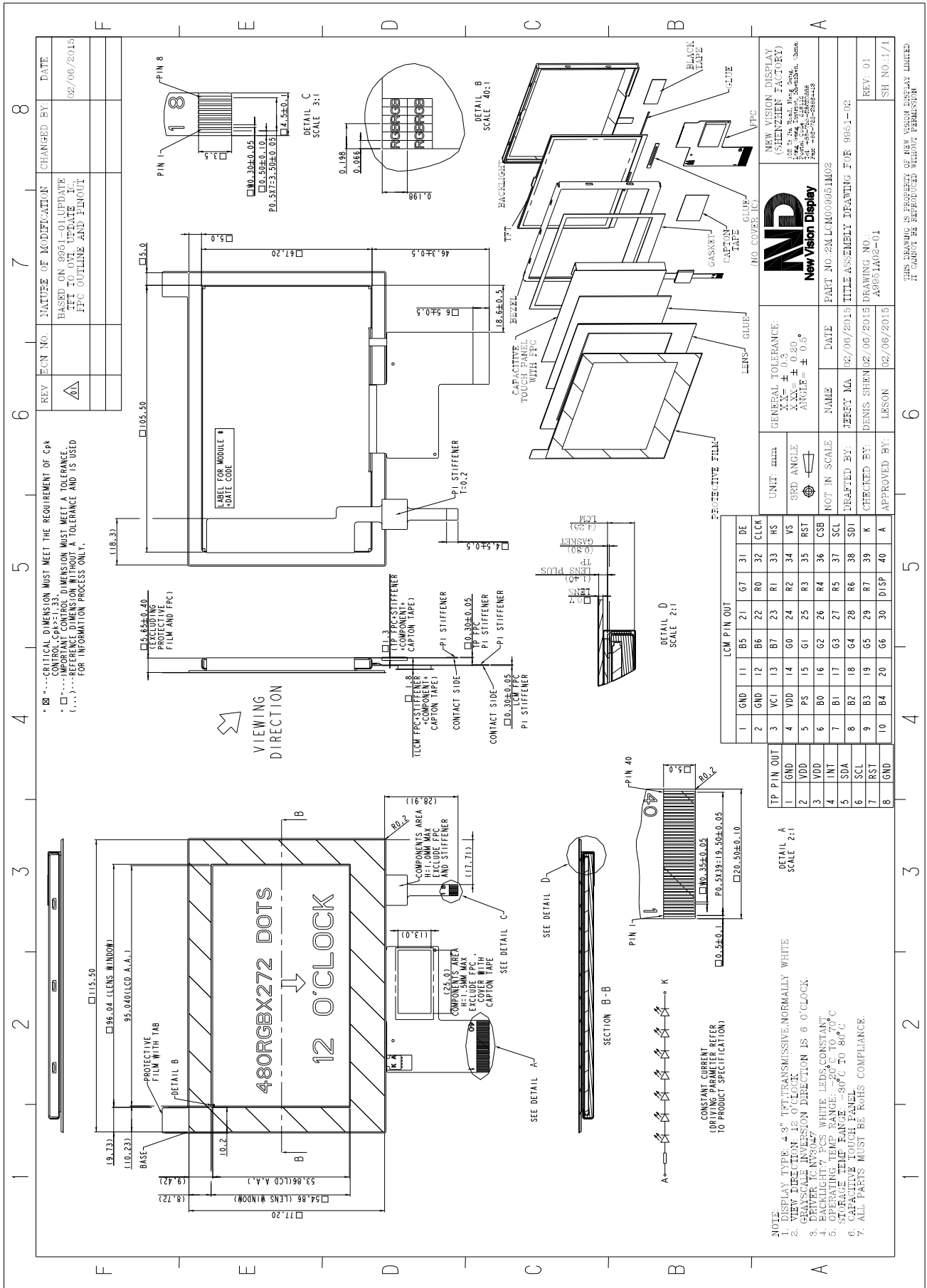


TFT PRODUCT SPECIFICATIONS	480RGB x 272	16.7M Colors	4.3" Diagonal
-----------------------------------	---------------------	---------------------	----------------------

Part Number	9951DPTL043H-02
Overall Dimensions	115.5 (H) x 77.2 (V) x 5.65(T)mm
Active Area	95.04 (H) x 53.856 (V) mm
Resolution	480 RGB (H) x 272 (V) Stripe
Pixel Size	0.198 x 0.198mm
Display Colors	16.7M
Display Mode	TN, Normally White, Transmissive
LCD Type	a-Si TFT
Contrast Ratio	350:1 (Typ)
View Direction	12 o'clock
Grayscale inversion Direction	6 o'clock
Viewing Angles (CR≥10)	Typ 65°/65°/65°/60° (Left/Right/Top/Bottom) Min 60°/60°/60°/55°(Left/Right/Top/Bottom)
Brightness (If=18mA)	200cd/m2 (Min)
NTSC	48.1%
Driver IC	NV3047
DVDD(Digital circuit)	3.0~3.6V
AVDD (pump circuit)	3.0~3.6V
Interface	RGB 24 Bits
Backlight System	7 White LEDs in Serial
Forward Voltage	22.4V(typ)
Forward Current	18 mA (typ)
Touch Panel Parameter	
Input Method	Finger or gloved finger
Number of simultaneous touches	One and gesture
Touch controller IC	FT6306
Min. spacing between two touches	18mm
Positional Accuracy	± 2.5mm at 4 edges and 1.5mm at center
Response Time / Speed	<10msec
Minimum Touch Area	30mm ²
Minimum Touch Pressure	0 N
Optical Transmittance	>87%
I2C Address	0X38
ESD Capability	15KV (Air discharge TP with lens)
Interface to Host	I2C
Operating Voltage	VDD=3.3V

The information contained herein is based upon typical data, New Vision Display makes no warranties expressed or implied as to its accuracy and assumes no liability arising out of its use by others. The user should determine suitability of New Vision Displays for each individual application.



The information contained herein is based upon typical data, New Vision Display makes no warranties expressed or implied as to its accuracy and assumes no liability arising out of its use by others. The user should determine suitability of New Vision Displays for each individual application.