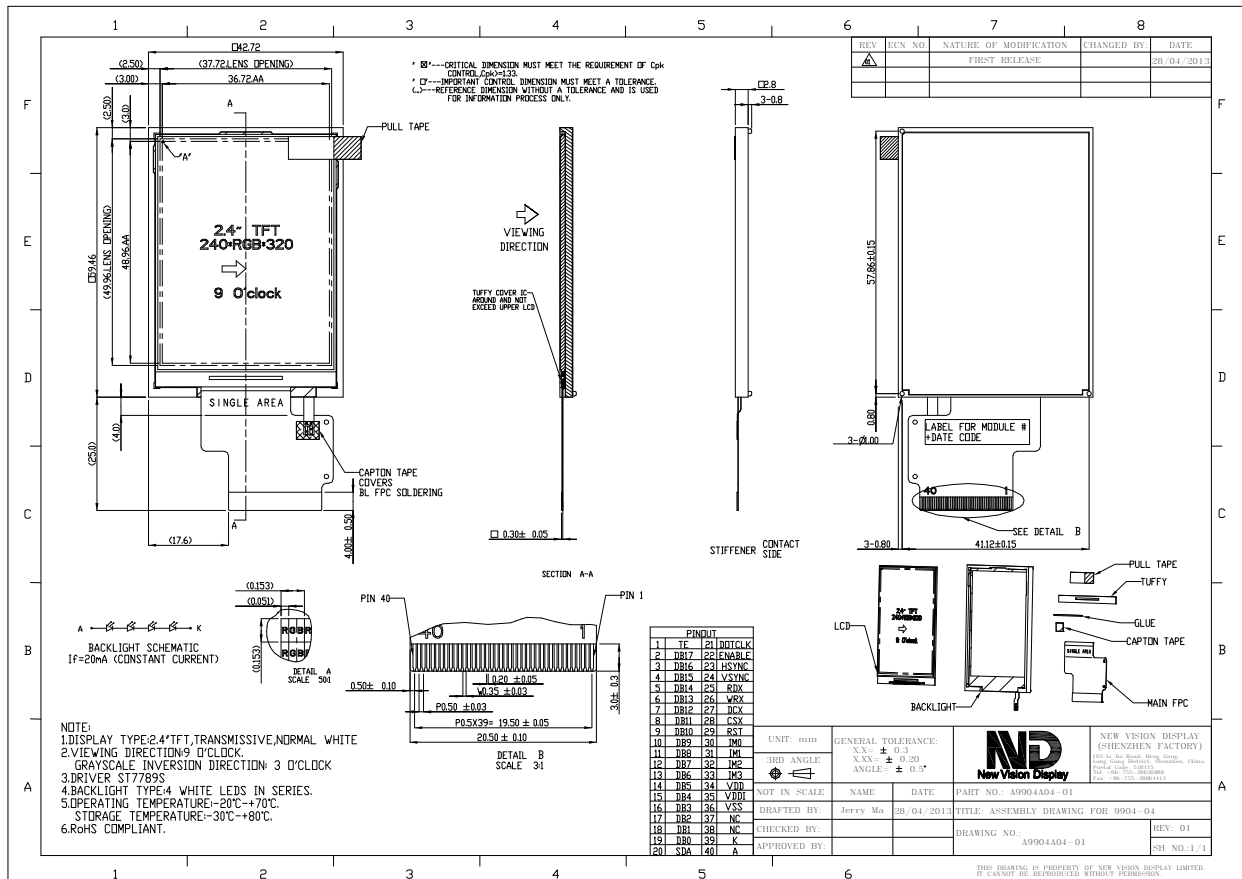


Part Number	9904DPLP024H-04
Overall Dimensions	42.72 (W) x 59.46(H) x 2.8(T) mm
Active Area	36.72 (H) x 48.96 (V) mm
Resolution	240RGB(H) x 320(V) Stripe
Pixel Size	0.153 x 0.153mm
Display Colors	262k
Display Mode	TN, Normally White, Transmissive
LCD Type	a-Si TFT
Contrast Ratio	500:1 (typ)
View Direction	9 o'clock
Grayscale inversion Direction	3 o'clock
Viewing Angles (CR≥10)	Typ 60°/65°/65°/65° (Left/Right/Top/Bottom) Min 55°/60°/60°/60°(Left/Right/Top/Bottom)
Brightness (I <sub>f</sub> =20mA)	480 cd/m <sup>2</sup> (min)
NTSC	55%
Driver IC	ST7789S or Equivalent
VDD( Power Supply)	2.4V - 3.3V
Interface	Parallel CPU /SPI/18-Bit RGB interface
Backlight System	4 White LEDs in Series
Forward Voltage	4 x 3.2V (typ)
Forward Current	20 mA (typ)



The information contained herein is based upon typical data, New Vision Display makes no warranties expressed or implied as to its accuracy and assumes no liability arising out of its use by others. The user should determine suitability of New Vision Displays for each individual application.