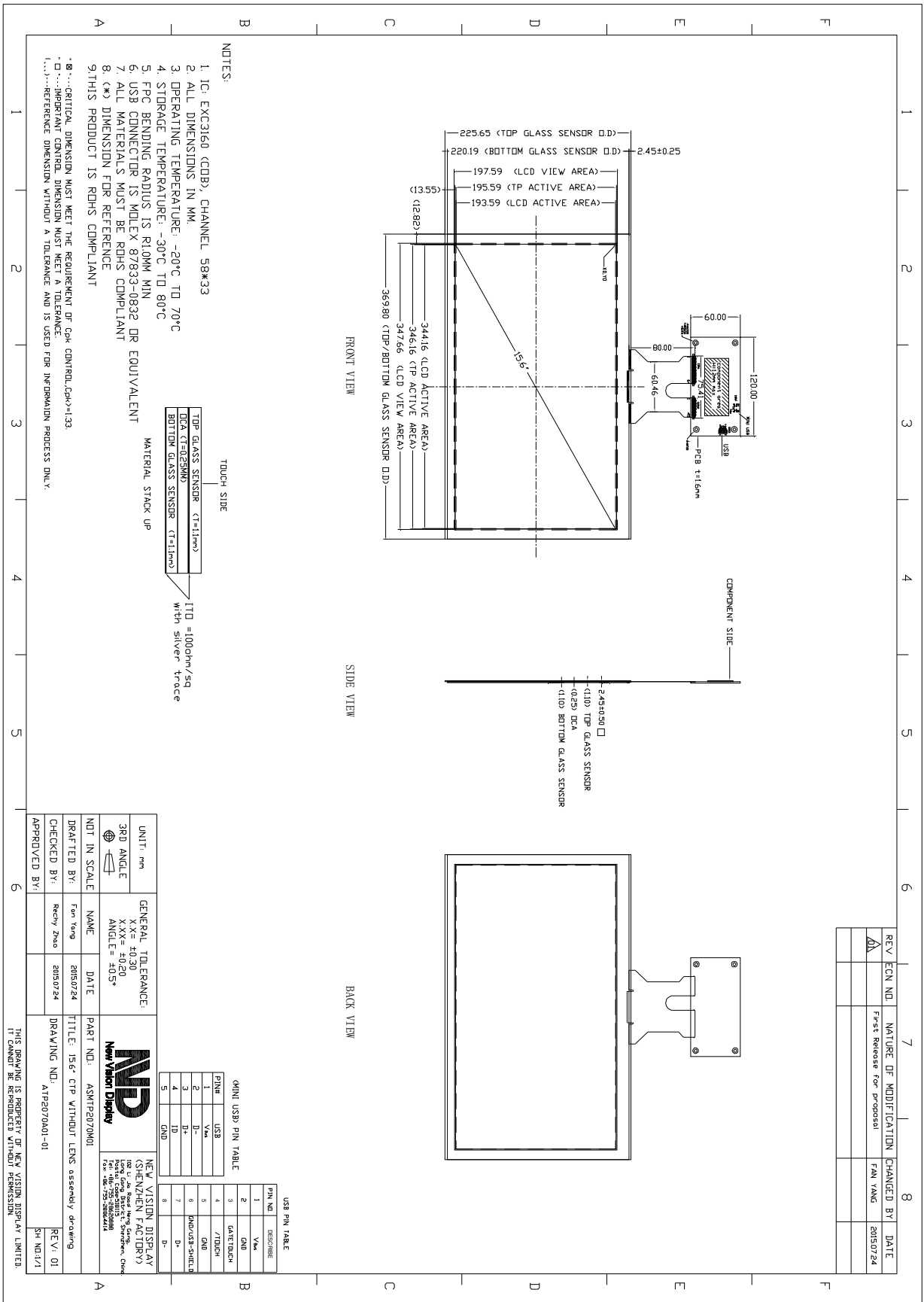


TOUCH PANEL SPECIFICATIONS	Projected Capacitive	Glass Substrate	15.6" Diagonal
Part Number	1P.NVDS-TP2070TA156C -01		
Outline Dimensions of TP sensor	369.80(H) x225.65(V) x 2.45(D)mm		
Overall Dimensions incl. cover lens	N/A		
Active Area	346.16(H) x 195.59 (V)mm		
Input Method	Bare or gloved finger or thick conductive stylus		
Number of simultaneous touches	10		
Min. spacing between two touches	20mm		
Positional Accuracy	± 2.5 mm at 4 edges and ± 1.5mm at center		
Resolution	4096*4096		
Response Time / Speed	<25ms		
Minimum Touch Area	30mm ²		
Minimum Touch Pressure	0 N		
Optical Transmittance	>87%		
ITO resistivity	100 Ω/□		
Operating temperature	-20°C to +70°C,35%~70% RH non-condensing		
Storage temperature	-30°C to +80°C,35%~70% RH non-condensing		
Life of touches	>10 million over lifetime		
Surface Hardness	7H		
Anti-glare surface	No		
FPC attachment method	ACF bonding		
FPC pull-off strength	>50 g/mm		
FPC bending radius	1mm		
Touch controller IC	EXC3160		
Interface to Host	USB		
I2C Address	N/A		
Operating Voltage	VDD=5.0V		

The information contained herein is based upon typical data, New Vision Display makes no warranties expressed or implied as to its accuracy and assumes no liability arising out of its use by others. The user should determine suitability of New Vision Displays for each individual application.



- NOTES:
1. I.C.: EX3C160 (COB), CHANNEL 58*33
 2. ALL DIMENSIONS IN MM
 3. OPERATING TEMPERATURE: -20°C TD 70°C
 4. STORAGE TEMPERATURE: -30°C TD 80°C
 5. FPC BENDING RADIUS IS R1.0MM MIN
 6. USB CONNECTOR IS MOLEX 87833-0832 OR EQUIVALENT
 7. ALL MATERIALS MUST BE ROHS COMPLIANT
 8. (*) DIMENSION FOR REFERENCE
 9. THIS PRODUCT IS ROHS COMPLIANT

TOUCH SIDE

TOP GLASS SENSOR (T=11mm)	TTD = 1000nm ² /sq with silver trace
CTP (T=0.25mm)	
BOTTOM GLASS SENSOR (T=11mm)	

MATERIAL STACK UP

UNIT: mm	GENERAL TOLERANCE:	
3RD ANGLE	X.XX ±0.20	
	ANGLE ±0.5°	
DRAFTED BY: Fan Yang	DATE: 2015/07/24	
CHECKED BY: Reay Zhao		
APPROVED BY:		
	PART NO.: ASMTP2070K01	
	TITLE: 15.6" CTP WITHOUT LENS assembly drawing	
	DRAWING NO.: A1P2070K01-01	
	REV: 01	
	DATE: 2015/07/24	
	BY: SHI NGI/VI	

MINI USB PIN TABLE

PIN#	USB	V _{CC}	D-	D+	NC
1	V _{CC}				
2	D-				
3	D+				
4	NC				
5	NC				

NEW VISION DISPLAY (SHENZHEN FACTORY)
 1st Flr, Long Gong Building, Shenzhen, China
 Tel: 86-755-28862888
 Fax: 86-755-28862814

USB PIN TABLE

PIN NO.	DESCRIPTION
1	V _{CC}
2	D-
3	D+
4	NC
5	NC



The information contained herein is based upon typical data, New Vision Display makes no warranties expressed or implied as to its accuracy and assumes no liability arising out of its use by others. The user should determine suitability of New Vision Displays for each individual application.