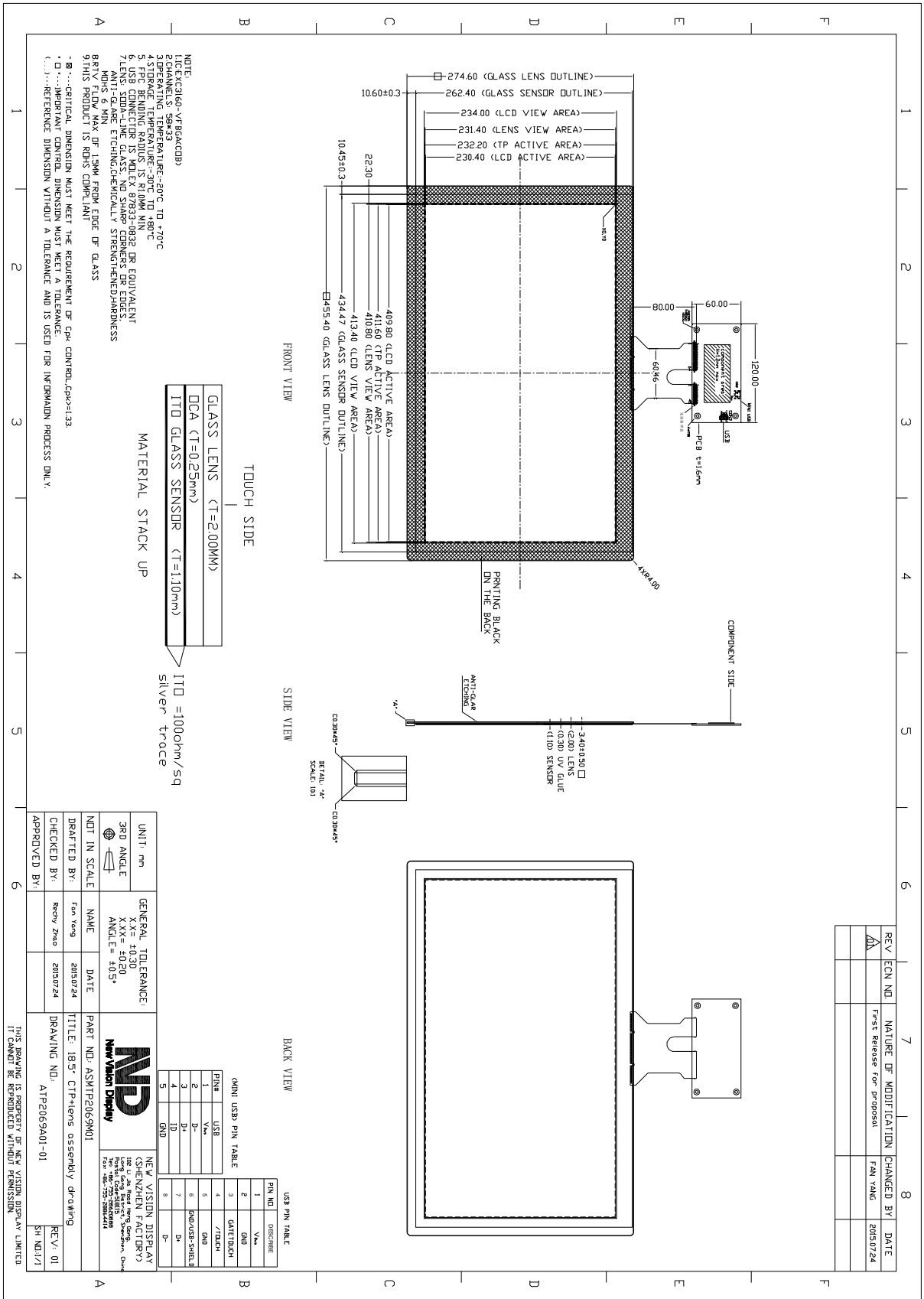


<b>TOUCH PANEL SPECIFICATIONS</b>	<b>Projected Capacitive</b>	<b>Glass Substrate</b>	<b>18.5" Diagonal</b>
Part Number	1P.NVDS-TP2069DA185C -01		
Outline Dimensions of TP sensor	434.47(H) x262.40(V) x 1.10(D)mm		
Overall Dimensions incl. cover lens	455.40(W) x 274.60(H) x 3.4 (D) (Note 1)		
Active Area	411.60(W) x 232.20 (H)		
Input Method	Bare or gloved finger or thick conductive stylus		
Number of simultaneous touches	10		
Min. spacing between two touches	20mm		
Positional Accuracy	± 2.5 mm at 4 edges and ±1.5mm at center		
Resolution	4096*4096		
Response Time / Speed	<25ms		
Minimum Touch Area	30mm <sup>2</sup>		
Minimum Touch Pressure	0 N		
Optical Transmittance	>87%		
ITO resistivity	100 Ω/□		
Operating temperature	-20°C to +70°C,35%~70% RH non-condensing		
Storage temperature	-30°C to +80°C,35%~70% RH non-condensing		
Life of touches	>10 million over lifetime		
Surface Hardness	7H		
Anti-glare surface	Yes		
FPC attachment method	ACF bonding		
FPC pull-off strength	>50 g/mm		
FPC bending radius	1mm		
Touch controller IC	EXC3160		
Interface to Host	USB		
I2C Address	N/A		
Operating Voltage	VDD=5.0V		

The information contained herein is based upon typical data, New Vision Display makes no warranties expressed or implied as to its accuracy and assumes no liability arising out of its use by others. The user should determine suitability of New Vision Displays for each individual application.



The information contained herein is based upon typical data, New Vision Display makes no warranties expressed or implied as to its accuracy and assumes no liability arising out of its use by others. The user should determine suitability of New Vision Displays for each individual application.